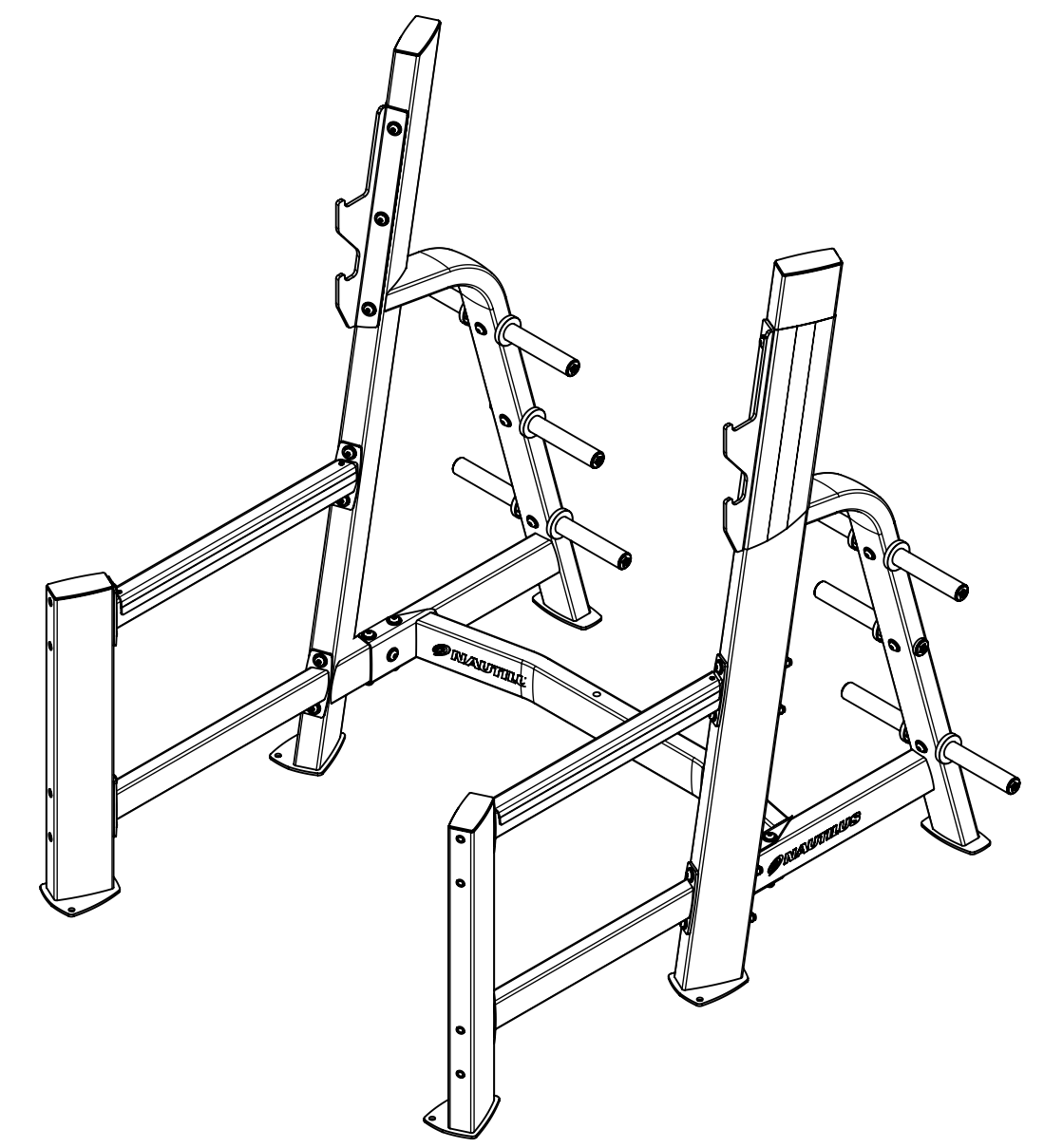
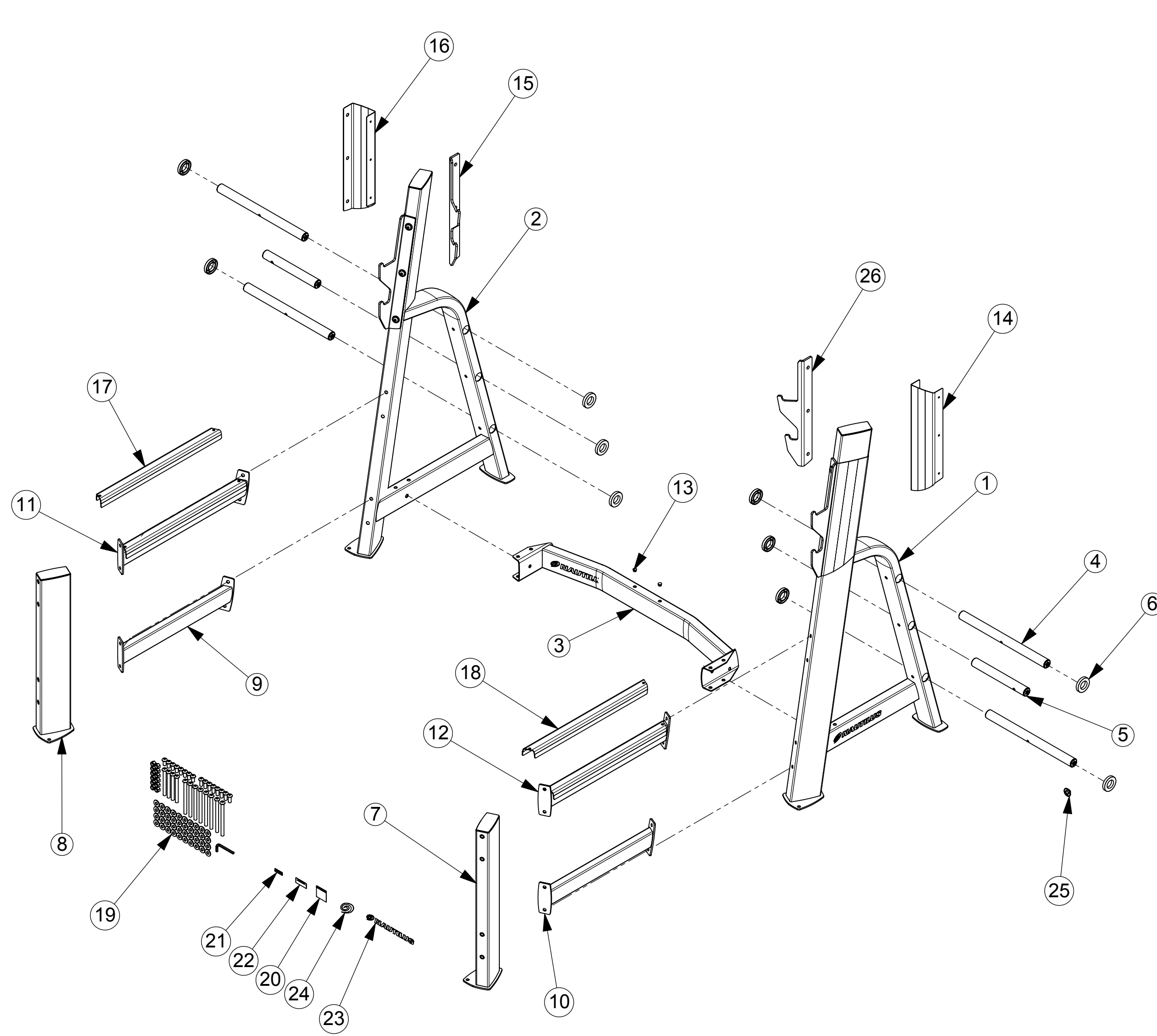


001-3903

		REVISIONS		APPROVED	DATE
ECO NUMBER	REVISION	REV DESCRIPTION			
11336	A	DRAWING RELEASE		EDG	4/3/2007



ITEM	WARRANTY/QTY.	PART NO.	DESCRIPTION
1	1	001-4251	ASSY, RIGHT UPRIGHT
2	1	001-4251	ASSY, LEFT UPRIGHT
3	1	001-4254	WDMT, SEAT CROSS TUBE
4	4	000-0844	ASSY, HORN TUBE, LONG
5	2	000-0845	ASSY, HORN TUBE, SHORT
6	10	000-0834	BUMPER, WEIGHT HORN
7	1	001-4254	ASSY., FRONT UPRIGHT, RIGHT
8	1	001-4254	WDMT, FRONT UPRIGHT, LEFT
9	1	001-3894	WDMT, SPOTTER, LEFT
10	1	001-3896	WDMT, SPOTTER, RIGHT
11	1	001-4127	LEFT BAILOUT ASSEMBLY
12	1	001-4128	RIGHT BAILOUT ASSEMBLY
13	2	001-4012	PLASTIC PLUG
14	1	001-4032	SCUFF GUARD, RIGHT
15	1	001-4399	BAR CATCH, PLATE, LEFT
16	1	001-4033	SCUFF GUARD, LEFT
17	1	001-3904	PLATE, TUBE GUARD
18	1	001-3909	PLATE, TUBE GUARD, RIGHT
19	1	001-4063	F3 SQUAT RACK HDWR CARD
20	1	001-4222	WARNING LABEL, GENERAL WARNING LABEL
21	1	001-4229	WARNING LABEL
22	1	001-4217	WARNING LABEL #5
23	1	001-4008	HORIZONTAL DECAL
24	1	001-4009	DECAL, CAM
25	1	000-0850	CAP, TUBE
26	1	001-4398	BAR CATCH, PLATE, RIGHT

**NAUTILUS**  
 NAUTILUS, INC.  
 16400 SE NAUTILUS DRIVE, VANCOUVER, WA 98683  
 CONTACT

DESIGNED J.Harrach  
 DRAWN S.MCCARTY  
 DATE 01/19/2007  
 ALL APPLICABLE NAUTILUS STANDARDS AND SPECIFICATIONS APPLY.

TITLE: **F3SR - SQUAT RACK**  
 SIZE PART NO. **001-3903**  
 REV. **A01**

SCALE: 1:33.3 SHEET 1 OF 1