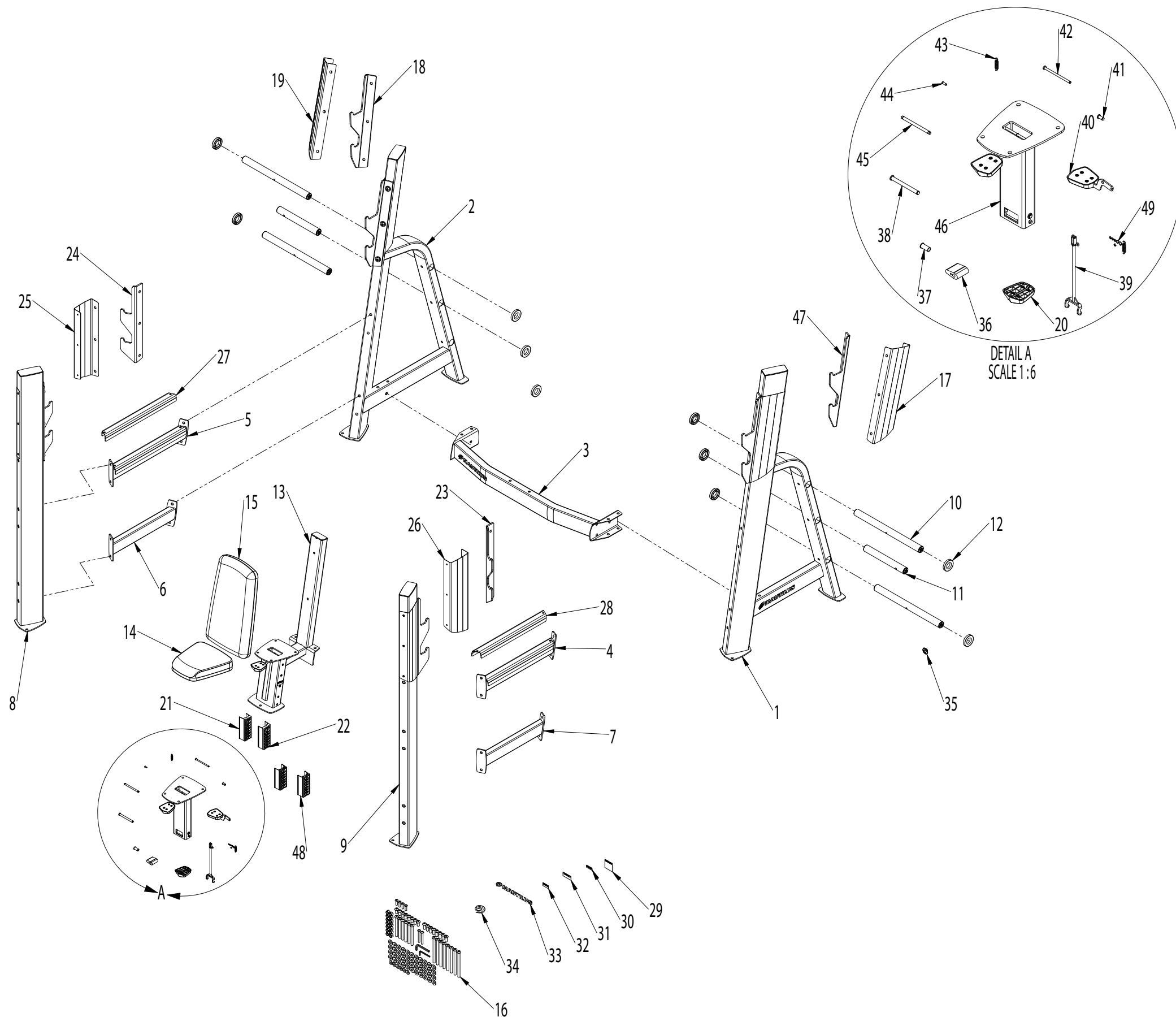


F30MB - OLYMPIC MILITARY BENCH



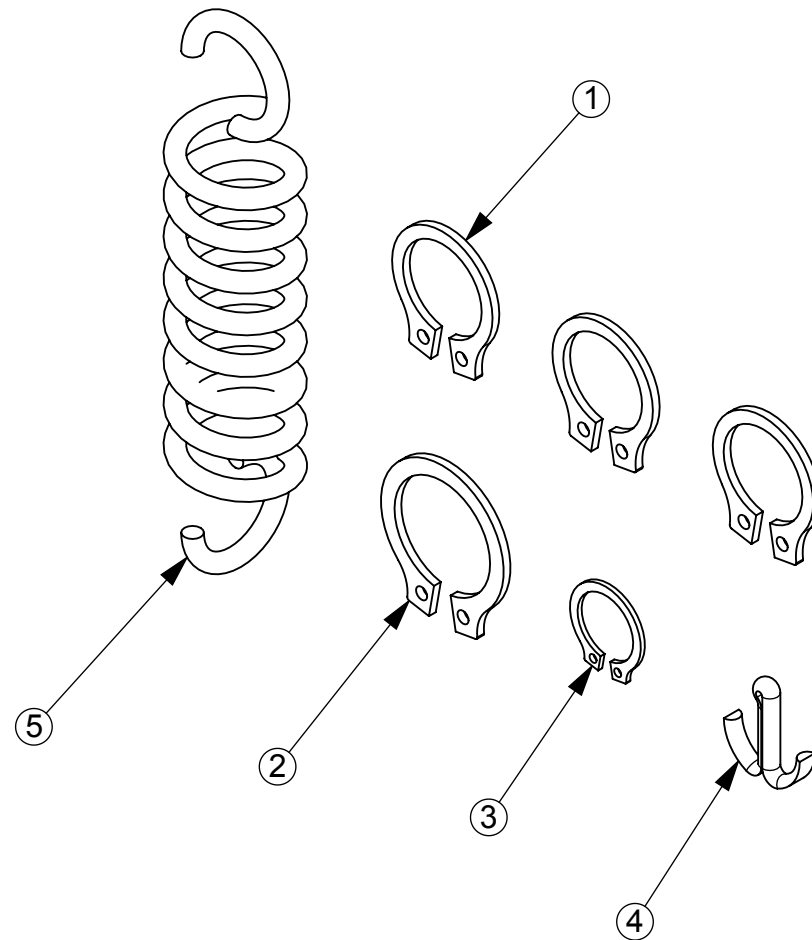
| ITEM | DESCRIPTION | PART NO. |
|------|---|----------|
| 1 | ASSY, RIGHT UPRIGHT | 001-4257 |
| 2 | ASSY, LEFT UPRIGHT | 001-4257 |
| 3 | WDMT, SEAT CROSS TUBE | 001-4262 |
| 4 | RIGHT BAILOUT ASSEMBLY | 001-4130 |
| 5 | LEFT BAILOUT ASSEMBLY | 001-4129 |
| 6 | WDMT, SPOTTER, LEFT LOWER | 001-4407 |
| 7 | WDMT, SPOTTER, RIGHT LOWER | 001-4409 |
| 8 | FRONT LEFT UPRIGHT ASSEMBLY | 001-4259 |
| 9 | FRONT RIGHT UPRIGHT ASSEMBLY | 001-4259 |
| 10 | ASSY, HORN TUBE, LONG | 000-0844 |
| 11 | ASSY, HORN TUBE, SHORT | 000-0845 |
| 12 | BUMPER, WEIGHT HORN | 000-0834 |
| 13 | SEAT ASSEMBLY | 001-4262 |
| 14 | ASSEMBLY, PREACHER SEAT | 001-5355 |
| 15 | ASSY, MILITARY SEAT | 000-1115 |
| 16 | F3 MILITARY BENCH HDWR CARD | 001-4057 |
| 17 | SCUFF GUARD, RIGHT | 001-4032 |
| 18 | BAR CATCH, PLATE, LEFT | 001-4399 |
| 19 | SCUFF GUARD, LEFT | 001-4033 |
| 20 | HANDLE MOLD ASSEMBLY | 001-3975 |
| 21 | SLIDE BUSHING, RIGHT | 001-3987 |
| 22 | SLIDE BUSHING, LEFT | 001-3988 |
| 23 | BAR CATCH, FRONT LEFT | 000-1496 |
| 24 | BAR CATCH, FRONT RIGHT | 001-1495 |
| 25 | SHEET, SCUFF GUARD | 000-1754 |
| 26 | SHEET, SCUFF GUARD MIRROR | 000-1755 |
| 27 | PLATE, TUBE GUARD | 001-3973 |
| 28 | PLATE, TUBE GUARD, RIGHT | 001-3974 |
| 29 | WARNING LABEL, GENERAL WARNING LABEL | 001-4222 |
| 30 | WARNING LABEL | 001-4229 |
| 31 | WARNING LABEL #5 | 001-4217 |
| 32 | WARNING LABEL | 001-4225 |
| 33 | HORIZONTAL DECAL | 001-4008 |
| 34 | DECAL, CAM | 001-4009 |
| 35 | CAP, TUBE | 000-0850 |
| 36 | ADJUST STOP LINK | 001-5273 |
| 37 | LONG BUSHING | 001-5275 |
| 38 | LOCK PIN | 001-5276 |
| 39 | WELDMENT, ADJ. STOP LEVER | 001-5280 |
| 40 | ASSEMBLY, SEAT ADJUSTMENT LEVER | 001-5289 |
| 41 | PIN, SEAT ADJUSTMENT PIVOT | 001-5285 |
| 42 | SPRING PIN | 001-5339 |
| 43 | SPRING, SEAT ADJUSTMENT | 000-1790 |
| 44 | PIN, SEAT ADJUSTMENT LEVER PIVOT | 001-5287 |
| 45 | SHAFT, SEAT STOP | 001-3991 |
| 46 | ASSEMBLY, SEAT SLIDER | 001-5267 |
| 47 | BAR CATCH, PLATE, RIGHT | 001-4398 |
| 48 | SLIDER, LOWER | 001-4730 |
| 49 | BAG, SMALL REPLACEMENT PARTS, SEAT SLIDER | 000-1493 |

000-1493

| ECO NUMBER | | REVISION | REVISIONS | APPROVED | DATE |
|------------|--|----------|-----------------|----------|------|
| | | | REV DESCRIPTION | | |

NOTES:

1. **WARRANTY ITEM: PKG. (1) ASSY / POLY-BAG**



| ITEM | QTY. | PART NO. | DESCRIPTION |
|------|------|----------|-------------------------|
| 1 | 3 | 902-3928 | RING-SNAP-EXT 8mm |
| 2 | 1 | 902-3931 | RING-SNAP-EXT 10mm |
| 3 | 1 | 902-3923 | RING-SNAP-EXT 6mm |
| 4 | 1 | 001-4724 | COTTER PIN, 1.50 DIA |
| 5 | 1 | 000-1790 | SPRING, SEAT ADJUSTMENT |

NAUTILUS
 NAUTILUS, INC.
 16400 SE NAUTILUS DRIVE, VANCOUVER, WA 98683

| | | | | |
|--|------------|-------|-------------------------------------|----------------|
| DESIGNED | S. MCCARTY | TITLE | BAG, SM REPL PARTS, SEAT ADJ | |
| DRAWN | S. MCCARTY | SIZE | PART NO. 000-1493 | REV. 01 |
| DATE | 04/16/2007 | | | |
| <small>ALL APPLICABLE NAUTILUS STANDARDS AND SPECIFICATIONS APPLY.</small> | | | | |