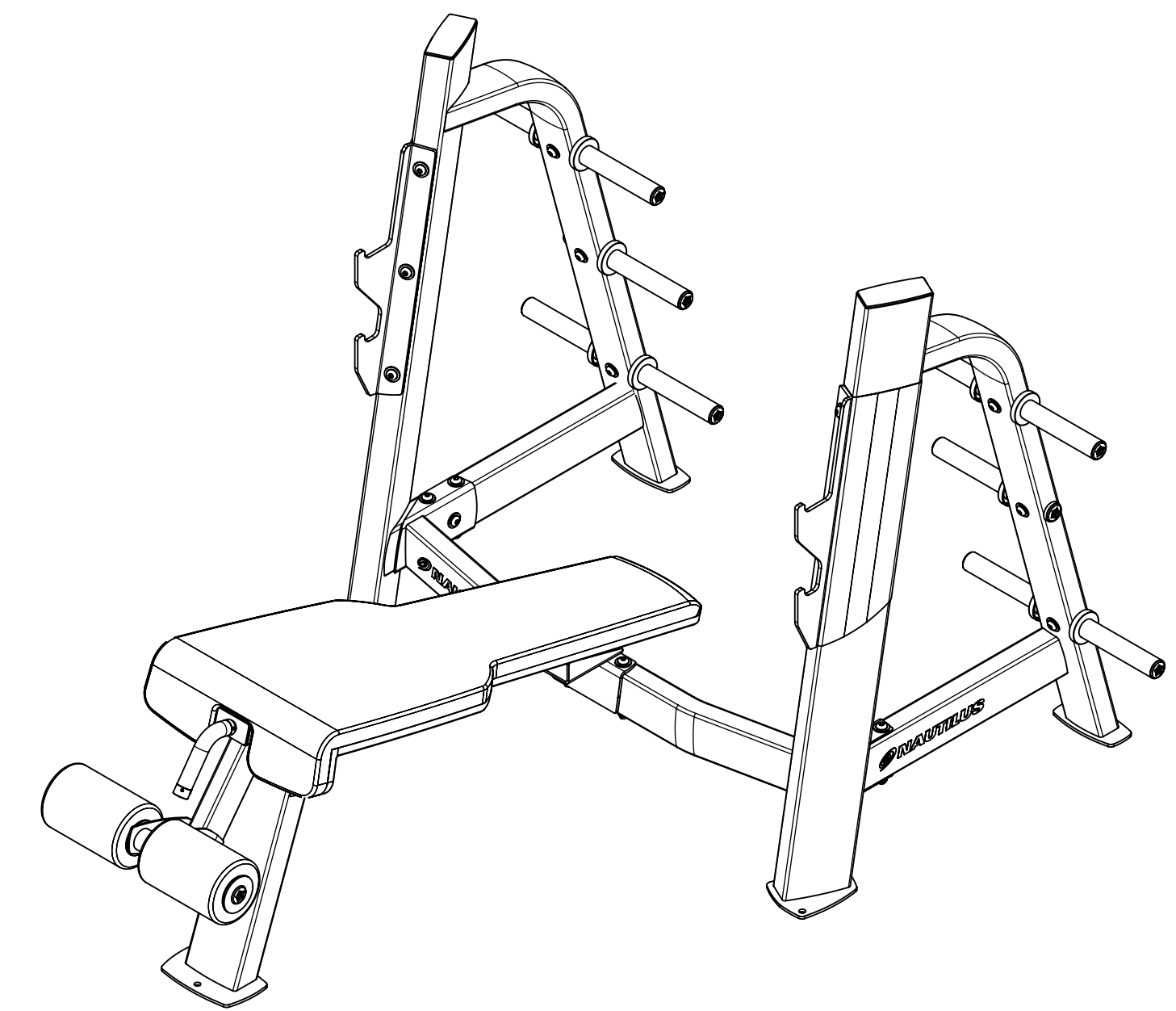
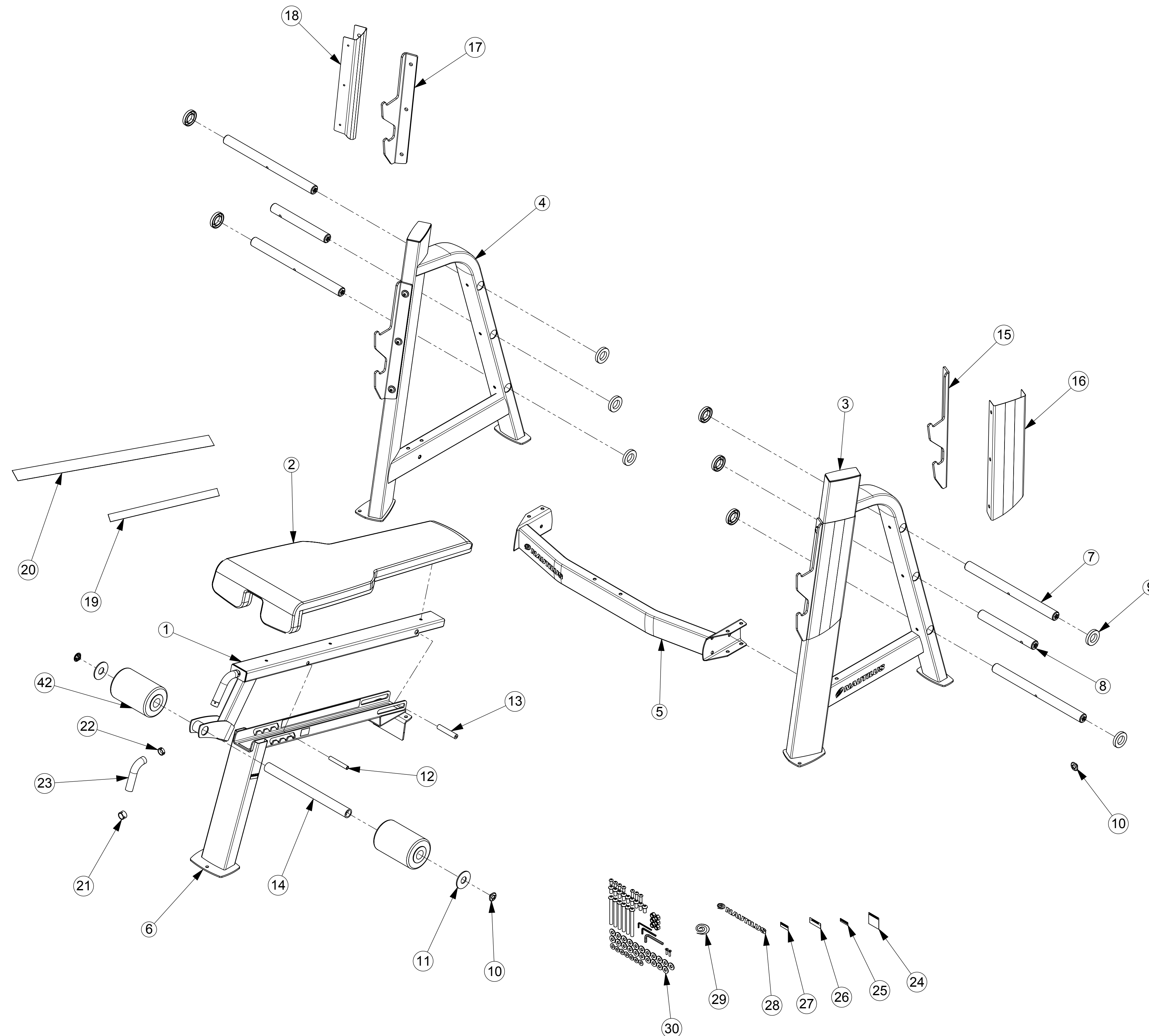


000-1401

ECO		REVISION	REV DESCRIPTION	APPROVED	DATE
11336		A	DRAWING RELEASE	EDG	4/4/2007



ITEM	WARRANTY /QTY.	PART NO.	DESCRIPTION
1	1	001-4248	SEAT FRAME ASSEMBLY
2	1	001-3931	BACK PAD ASSEMBLY
3	1	001-4246	ASSY, RIGHT UPRIGHT
4	1	001-4246	ASSY, LEFT UPRIGHT
5	1	001-4248	WDMT, SEAT CROSS TUBE
6	1	001-4248	SEAT ASSEMBLY
7	4	000-0844	ASSY, HORN TUBE, LONG
8	2	000-0845	ASSY, HORN TUBE, SHORT
9	10	000-0834	BUMPER, WEIGHT HORN
10	3	000-0850	CAP, TUBE
11	2	000-1065	WASHER, BUMPER END
12	1	001-3876	SHAFT, ADJUSTMENT
13	1	001-3877	SHAFT, ADJUSTMENT PIN
14	1	000-1312	ROLLER SHAFT ASSEMBLY
15	1	001-4398	BAR CATCH, PLATE, RIGHT
16	1	001-4032	SCUFF GUARD, RIGHT
17	1	001-4399	BAR CATCH, PLATE, LEFT
18	1	001-4033	SCUFF GUARD, LEFT
19	1	001-3929	MYLAR STRIP, SIDE CHANNEL
20	1	001-3930	MYLAR STRIP, BOTTOM CHANNEL
21	1	000-1513	HANDLE CAPS
22	1	000-1535	RING, HANDLE ENDS
23	1	000-0721	RUBBER HANDLE GRIP
24	1	001-4222	WARNING LABEL, GENERAL WARNING LABEL
25	1	001-4229	WARNING LABEL
26	1	001-4217	WARNING LABEL #5
27	1	001-4225	WARNING LABEL
28	1	001-4008	HORIZONTAL DECAL
29	1	001-4009	DECAL, CAM
30	1	001-4064	ODB HDWR CARD
42	2	001-4691	ASSY, THIGH ROLLER

**NAUTILUS**  
 NAUTILUS, INC.  
 16400 SE NAUTILUS DRIVE, VANCOUVER, WA 98683  
 CONTACT

This document is the property of Nautilus, Inc. It may not be reproduced in whole or part, provided to third parties, or used for any purposes other than the performance of work for Nautilus, Inc. without written authorization. All rights are reserved, including copyrights.

DESIGNED	J.HARRACH	TITLE	<b>MAIN ASSY, F30DB, OLY DECLINE BENCH</b>	
DRAWN	S.MCCARTY	SIZE	<b>D</b>	REV. <b>A01</b>
DATE	01/23/2007	PART NO.	<b>000-1401</b>	
ALL APPLICABLE NAUTILUS STANDARDS AND SPECIFICATIONS APPLY.		SCALE:	1:33.3	SHEET 1 OF 1