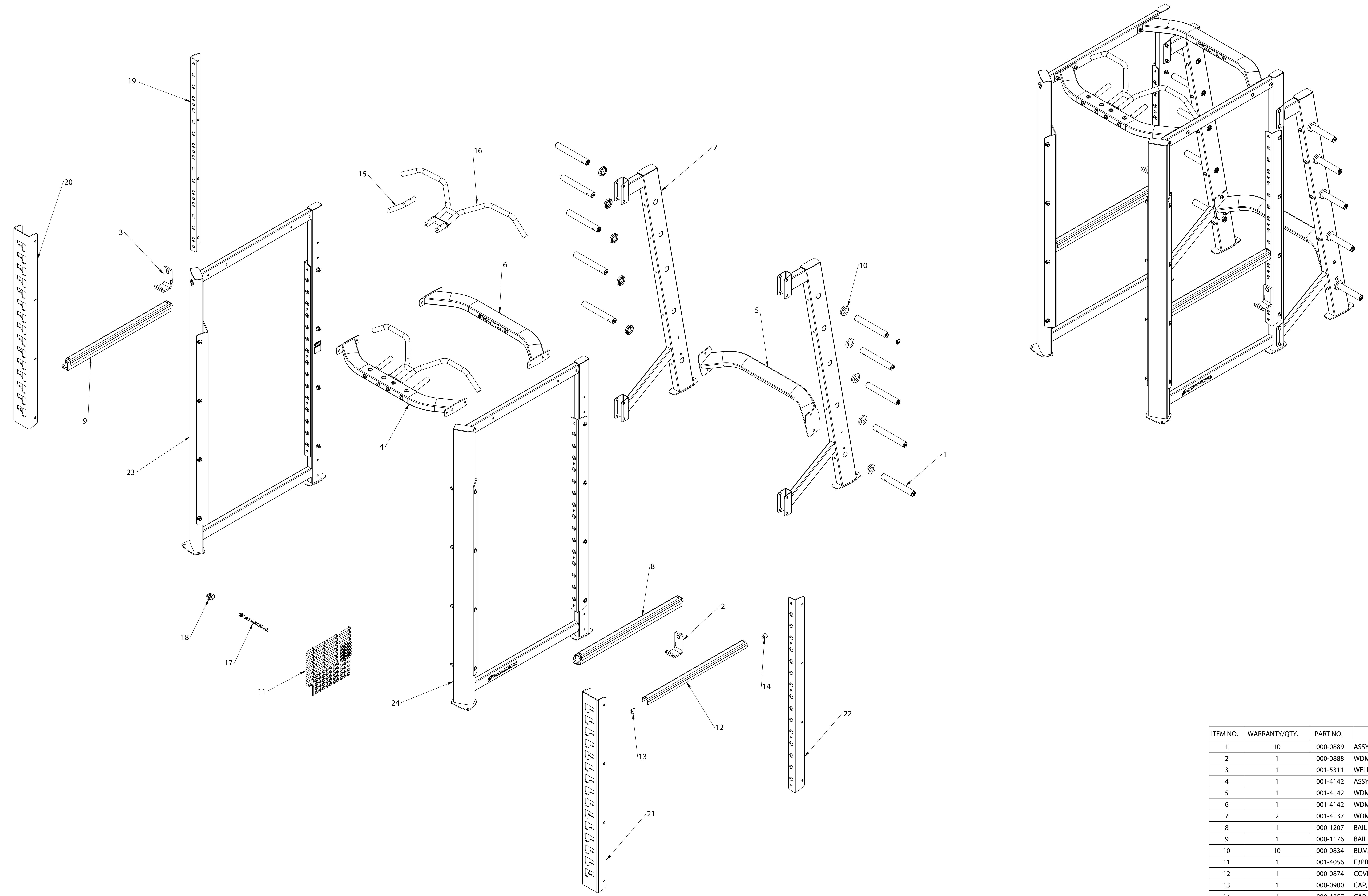


ECO NUMBER		REVISIONS		APPROVED	DATE
11336	A	DRAWING RELEASE		EDG	4/2/2007
11742	B	WARRANTY BOM UPDATE		EDG	5/29/2007



NOTE: F3 units are available in Nautilus Silver and White. If you require a painted part for replacement, please add a "-S" (for Silver example: 001-4229-S) to the end of the part number or a "-W" (for White example: 001-4229-W).

ITEM NO.	WARRANTY/QTY.	PART NO.	DESCRIPTION
1	10	000-0889	ASSY, HORN TUBE, SHORT
2	1	000-0888	WDMT, BAR CATCH, RIGHT
3	1	001-5311	WELDMENT, BAR CATCH, LEFT
4	1	001-4142	ASSY, PULLUP BAR
5	1	001-4142	WDMT, RACK CROSS
6	1	001-4142	WDMT, TOP CROSS
7	2	001-4137	WDMT, RACK
8	1	000-1207	BAIL OUT ASSEMBLY, RIGHT
9	1	000-1176	BAIL OUT ASSEMBLY, LEFT
10	10	000-0834	BUMPER, WEIGHT HORN
11	1	001-4056	F3PR - HARDWARE CARD
12	1	000-0874	COVER, SAFETY BAR
13	1	000-0900	CAP, PLATED ANGLED, BAIL OUT
14	1	000-1257	CAP, PLATED, BAIL OUT
15	1	000-1758	BAR, PARALLEL GRIP
16	1	001-3997	WELDMENT, PULL-UP BARS
17	1	001-4008	HORIZONTAL DECAL
18	1	001-4009	DECAL, CAM
19	1	000-0879	BRKT, BAIL, LEFT, REAR
20	1	000-0890	BRKT, BAIL, LEFT, FRONT
21	1	000-0891	BRKT, BAIL, RIGHT, FRONT
22	1	000-0892	BRKT, BAIL, RIGHT, REAR
23	1	001-4134	ASSY, FRAME, LEFT
24	1	001-4139	ASSY, FRAME, RIGHT

NAUTILUS, INC.
 16400 SE NAUTILUS DRIVE, VANCOUVER, WA 98683
 CONTACT: **NAUTILUS**

This document is the property of Nautilus, Inc. It may not be reproduced in whole or part, provided to third parties, or used for any purposes other than the performance of work for Nautilus, Inc. without written authorization. All rights are reserved, including copyrights.

DESIGNED **J. HARRACH**
 DRAWN **S. MCCARTY**
 DATE **12/12/2006**

TITLE **POWER RACK**
 SIZE **E** PART NO. **000-0859** REV. **B**
 SCALE: 1:25 SHEET 1 OF 2