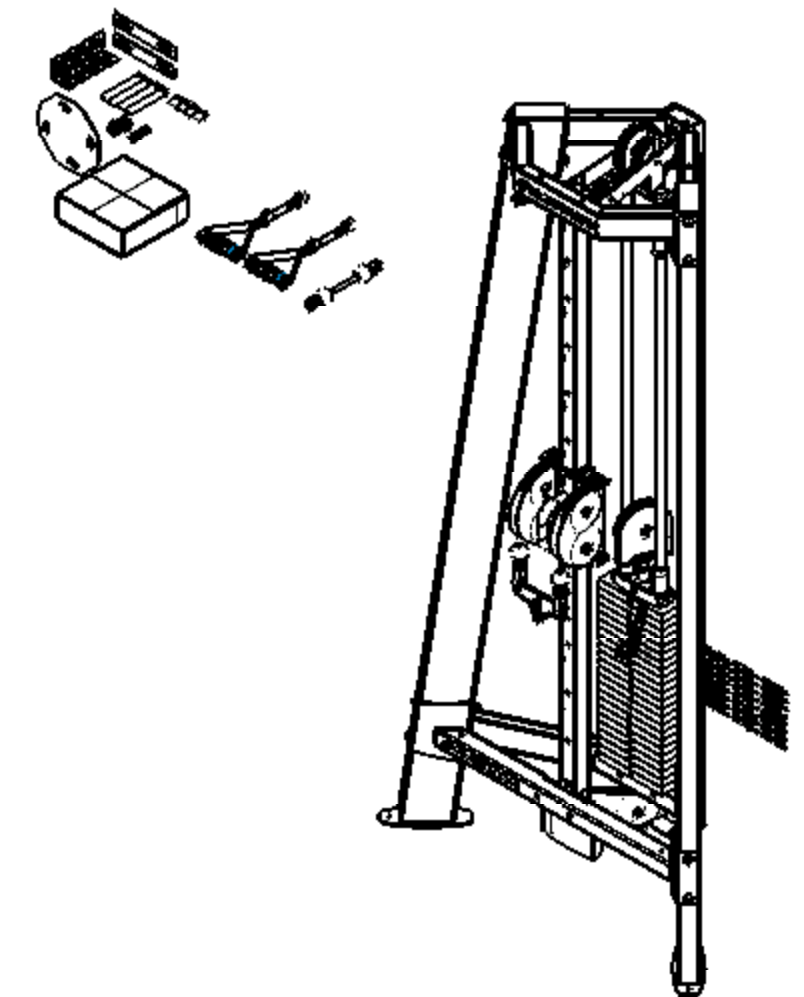
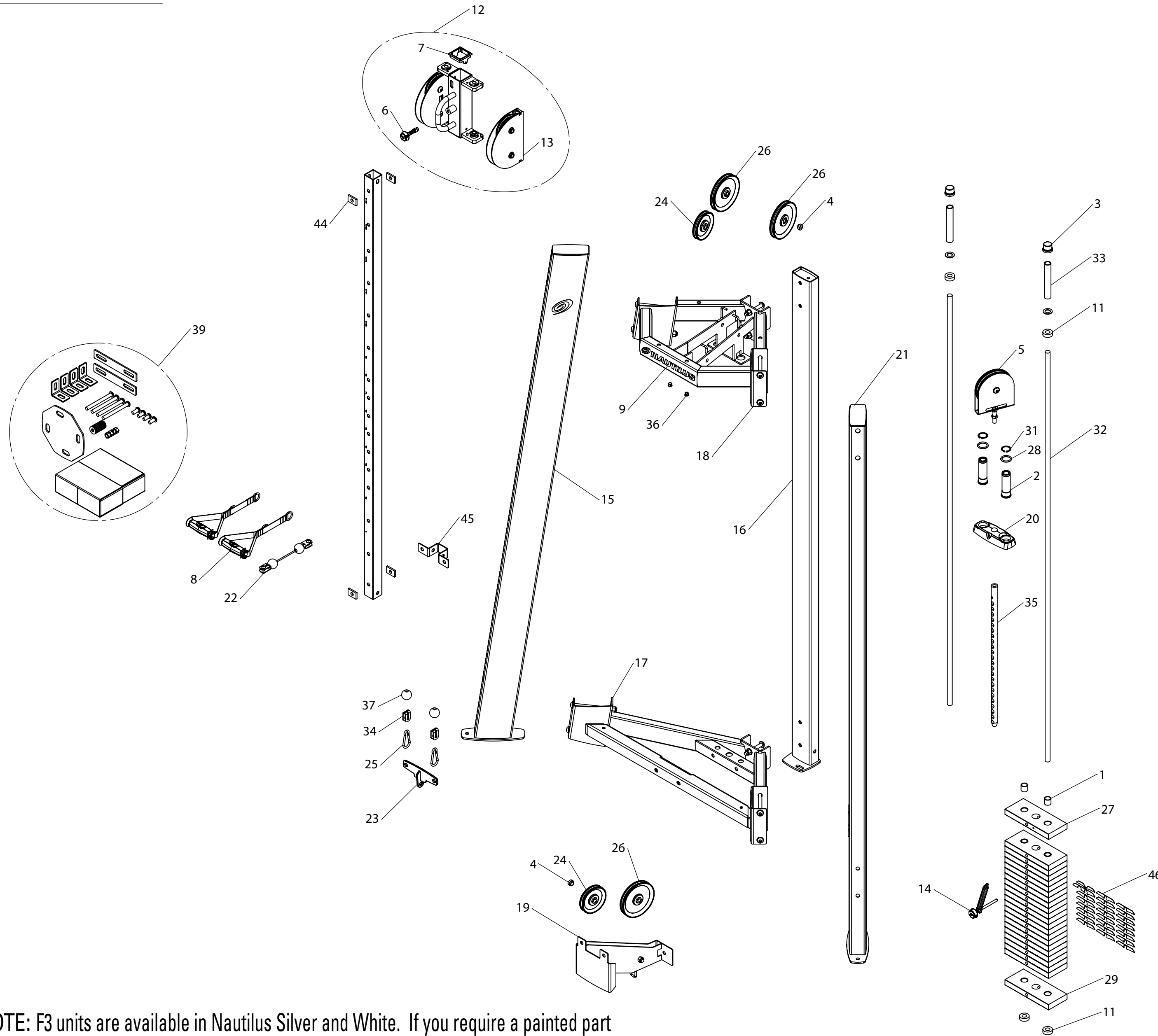


001-4440

MATERIAL: VARIOUS

FINISH: --

REVISIONS				
ECO NUMBER	REVISION	REV DESCRIPTION	APPROVED	DATE
-	-	See BOM-EXPLODED	-	-

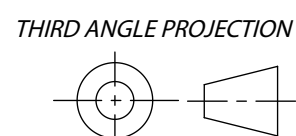


Item Number	Part Number	Description
1	05-4020	Standard Guide Rod/Weight Bushing
2	001-4587	Molded Top Weight Sleeve
3	09-8018	GUIDE ROD BUSHING
4	000-0958	PULLEY BUSHING
5	000-0974	ASSY, STACK PULLEY
6	000-1256	PIN ASSY, ADJ. PULLEY, F3AT
7	000-1586	SLIDE CAP FOR 50mm TUBE
8	000-7165	Nautilus Commercial Series Handle Assembly
9	001-4008	HORIZONTAL DECAL
10	001-4052	(NOT SHOWN) HARDWARE PACK
11	001-4365	BUMPER, UPPER GUIDE ROD
12	001-4794	ASSY, DUAL ADJUST. PULLEY SYSTEM
13	001-4795	ASSY, ADJ PULLEY SIDE
14	001-4414	PIN ASSY, WT STACK, F3 TOWERS
15	001-4597	WDMT, LEFT UPRIGHT
16	001-4597	WDMT, REAR UPRIGHT
17	001-4596	ASSY, LOWER TRIANGLE
18	001-4596	WDMT, UPPER TRIANGLE
19	001-4644	ASSY, LOWER PULLEYS
20	001-4461	TOP WEIGHT PLATE, 1.75LB
21	001-4597	ASSY, RIGHT UPRIGHT
22	001-4479	ASSY, F3AT CABLE
23	001-4560	WDMT, 6IN 2-1 ATTACHMENT
24	001-4562	4.5IN PULLEY
25	001-4565	CLIP, CARABINEER
26	001-4566	6.0IN PULLEY
27	17-2206	WEIGHT PLATE, 10LB, SECOND
28	001-4576	O-RING, TOWER WT. STACK
29	17-2203	WEIGHT PLATE, 10LB, BOTTOM
30	19-1135	(NOT SHOWN) TOUCH UP PAINT 2oz
31	902-3958	Snap Ring, 1 1/4" External
32	000-0967	ROD, STACK GUIDE
33	001-4364	TUBE, GUIDE ROD STOP
34	001-4457	SLOTTED STRAP FORK
35	001-4471	STEM PIN, CFW STACK
36	001-4012	PLASTIC PLUG
37	001-4481	RUBBER BALL
38	001-4084	(NOT SHOWN) F3AT ASSY/SERVICE MANUAL
39	001-4640	KIT, TOWER POD BRACKETS
40	001-4219	(NOT SHOWN) WARNING LABEL, CAUTION, WEIGHT STACK PINCH POINT
41	001-4218	(NOT SHOWN) WARNING LABEL, CAUTION, PINCH POINT
42	001-4220	(NOT SHOWN) WARNING LABEL #6
43	001-4009	(NOT SHOWN) DECAL, CAM
44	001-4470	SPACER, ADJ TUBE
45	000-0989	BRKT, LOWER ADJ TUBE
46	001-4636	WEIGHT STACK DECALS 240lbs

NOTE: F3 units are available in Nautilus Silver and White. If you require a painted part for replacement, please add a "-S" (for Silver example: 001-4229-S) to the end of the part number or a "-W" (for White example: 001-4229-W).

UNLESS OTHERWISE SPECIFIED:
 1. ALL DIMENSIONS APPLY BEFORE PLATING OR COATING.
 2. REMOVE ALL BURRS, BREAK SHARP EDGES 0.5 MM MAX.
 3. ALL MACHINES SURFACES Ra 3.2 uM.
 4. ALL APPLICABLE NAUTILUS STANDARDS AND SPECIFICATIONS APPLY.

METRIC



TOLERANCES:
 X. ± 3
 X.X ± 0.5
 X.XX ± 0.25
 X.XXX ± 0.1
 ANGULAR ± 1°
(INTERPRET DIMENSIONS AND TOLERANCES PER ASME Y14.5M - 1994)

DESIGNED M. HOLTAN
 DRAWN SWalker
 DATE 11/03/2005
DO NOT SCALE DRAWING

TITLE: MAIN ASSY, F3AT, ASSEMBLED FRAME
 SIZE C PART NO. 001-4440 REV. C

NAUTILUS, INC.
 16400 SE NAUTILUS DRIVE, VANCOUVER, WA 98683
 CONTACT mholtan@nautilus.com / 303.545.1493

This document is the property of Nautilus, Inc. It may not be reproduced in whole or part, provided to third parties, or used for any purposes other than the performance of work for Nautilus, Inc. without written authorization. All rights are reserved, including copyrights.

SCALE: 1:12 SHEET 3 OF 3

METRIC C REV. E