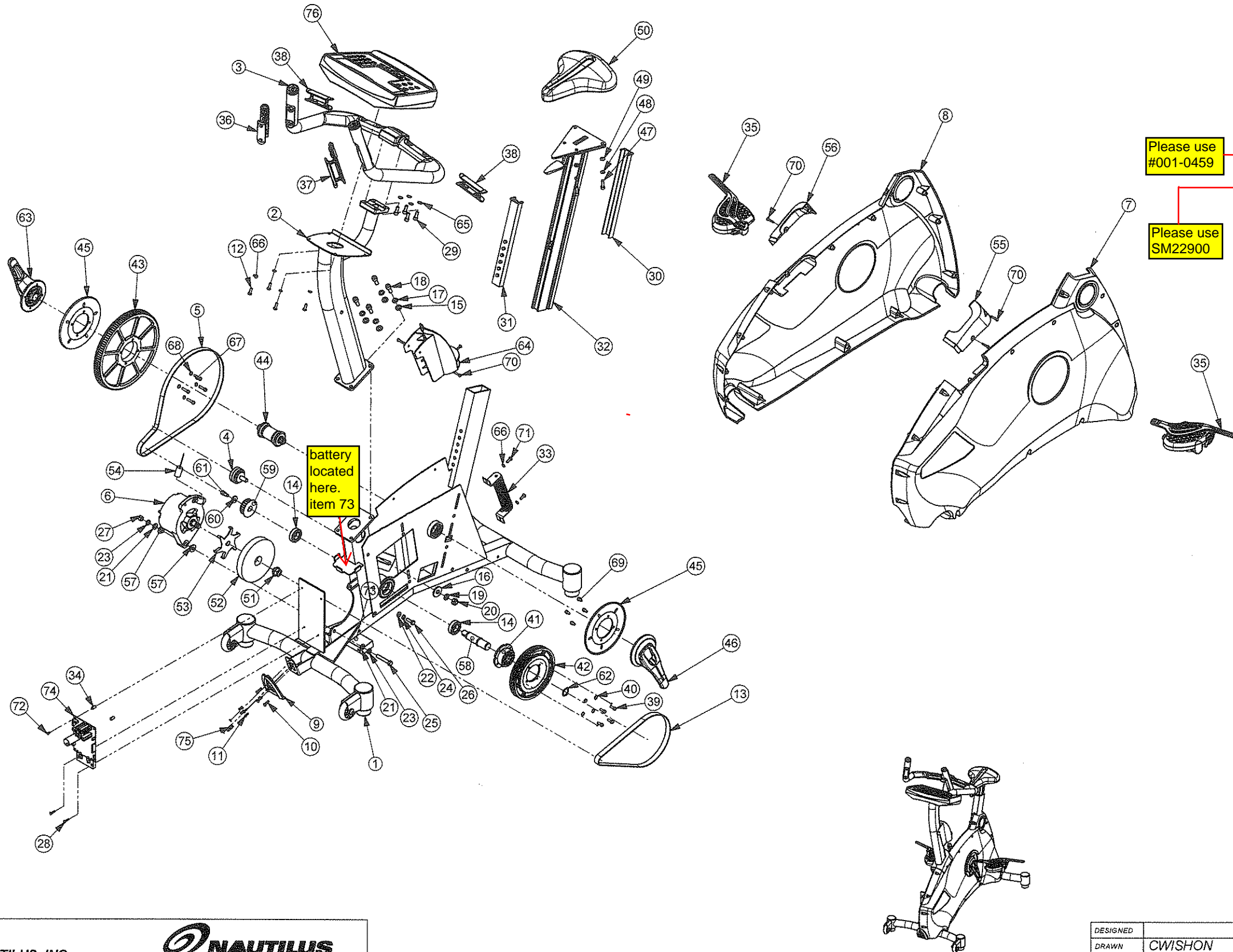


000-6296

REVISIONS				
ECO NUMBER	REVISION	REV DESCRIPTION	APPROVED	DATE
10809	A	Drawing Release	A. LULL	12/7/2006



ITEM NO	QTY	PART #	DESCRIPTION
1	1	001-0343	(CS) ASSY. FRAME, U916
2	1	000-6221	ASSEMBLY, MAST
3	1	000-6209	HANDLEBAR OVERMOLD ASSEMBLY
4	1	000-6232	BELT TENSIONER
5	1	000-6291	BELT JASON 1120-BMT-16
6	1	000-6240	ASSEMBLY, ALTERNATOR
7	1	001-0340	(CS) ASSY SIDE COVER LH U916
8	1	001-0341	(CS) ASSY SIDE COVER RH U916
9	1	000-6257	INLET COVER
10	3	901-5493	SCW-PHP #10-32x0.75 SS
11	4	901-5445	SCW-PHP #6-32x0.5 SS
12	4	901-5513	SCW-PHP 0250-20x0.75 SS
13	1	000-6432	BELT
14	2	000-6276	S6005 25 x 47 BEARING
15	4	902-6026	WSH-FLAT M10 REGULAR BLKZ
16	1	902-6030	WSH-FLAT M12 WIDE BLKZ
17	4	000-6484	M10 LOCK WASHER
18	4	902-4742	SCW-SHCS M10-1.5x25 G2 BlkZ
19	1	000-6488	M12 LOCK WASHER
20	1	902-4143	NUT NL M12-1.75 G2 BlkZ
21	2	902-3645	WSH-FLAT 0375 SAE ZINC
22	1	902-3640	WSH-FLAT 0313 SAE ZINC
23	2	902-3853	WSH-LOCK 0375 ZINC
24	1	902-3852	WSH-LOCK 0313 ZINC
25	1	902-0401	SCW-HHCS 0375-16x2.25 G8-Zinc
26	1	902-0363	SCW-HHCS 0313-18x1 G8-Zinc
27	1	902-3189	NUT-NL 0375-16 G8-ZINC
28	2	902-5108	SCW-FHP M4x0.7x20 SS
29	4	902-5680	SCW-SHCS M8-1.25x20 SS
30	1	000-6297	SEAT POST SLEEVE
31	1	000-6255	SEAT ADJUSTMENT TEETH
32	1	000-6269	ASSY SEAT POST
33	1	000-6217	POWER RESISTOR
34	2	000-6245	CIRCUIT BOARD SPACER
35	1	001-0342	(CS) KIT PEDALS, LH AND RH, U916 R916
36	1	001-0349	(CS) KIT CHR, RH UPPERHANDLE, U916
37	1	001-0348	(CS) KIT CHR, LH UPPERHANDLE, U916
38	2	001-6341	ASSEMBLY, CHR, NON ROC
39	4	902-5665	SCW-SHCS M6-1.0x16 SS
40	4	902-6104	WSH-FLAT M6 REGULAR ZINC
41	1	000-6314	PULLEY ASSEMBLY, INTERMEDIATE HUB
42	1	000-6214	OVERMOLD, INTERMEDIATE 8V PULLEY
43	1	000-6248	PULLEY, 112 TOOTH 8M
44	1	000-6244	ISIS BB, 73 X 128mm
45	2	001-6365	DISC, CRANK
46	1	000-6324	CRANK ARM LEFT
47	4	902-5681	SCW-SHCS M8-1.25x25 SS
48	4	000-6275	M8 LOCK WASHER
49	4	902-6065	WSH-FLAT M8 REGULAR SS
50	1	000-6264	SEAT, MED WIDTH
51	1	21778	NUT, ALTERNATOR
52	1	000-6238	FLYWHEEL
53	1	22517	DISK, SPEED SENSOR
54	1	21445	SPEED SENSOR ASSEMBLY
55	1	000-6259	SHROUD, MAIN PLASTIC LEFT
56	1	000-6260	SHROUD, MAIN PLASTIC RIGHT
57	2	22191	Alt. mounting bushing
58	1	000-6226	SHAFT, INTERMEDIATE HUB
59	1	000-6229	PULLEY, 8M INTERMEDIATE 22T
60	1	902-6024	WSH-FLAT M8 WIDE BLKZ
61	1	902-4725	SCW-SHCS M8-1.25x20 G2 BlkZ
62	2	001-0351	RETAINING RING
63	1	001-0391	CRANK ARM RIGHT
64	1	001-0424	WATER BOTTLE HOLDER
65	4	902-6533	WSH-FLAT M8 NARROW NICKLE
66	6	902-6062	WSH-FLAT M6 REGULAR SS
67	4	902-4712	SCW-SHCS M6-1.0x25 G2 BlkZ
68	4	902-6531	WSH-FLAT M6 REGULAR NICKLE
69	4	902-4707	SCW-SHCS M6-1.0x10 G2 BlkZ
70	6	901-5495	SCW-PHP #10-32x1 SS
71	2	902-5890	SCW-PHP M6 - 1.0x16 SS
72	2	902-5862	SCW-PHP M4 - 0.7x8 SS
73	1	SM14123	BATTERY SERVICE KIT
74	1	SM27451	CIRCUIT BOARD ASSY
75	1	000-6246	COAX Female Connector
76	1	41700	CONSOLE, C51, LCD, U916

NAUTILUS, INC.
16400 SE NAUTILUS DRIVE, VANCOUVER, WA 98683

DESIGNED	TITLE	U916, COMMERCIAL UPRIGHT BIKE	
DRAWN CWISHON	SIZE	PART NO. 000-6296	REV. A02
DATE 12/20/2005	D		
ALL APPLICABLE NAUTILUS STANDARDS AND SPECIFICATIONS APPLY.			
SCALE: 1:7 SHEET 1 OF 2			

This document is the property of Nautilus, Inc. It may not be reproduced in whole or part, provided to third parties, or used for any purposes other than the performance of work for Nautilus, Inc. without written authorization. All rights are reserved, including copyrights.

U916, UPRIGHT BIKE, WBOM, INT'L SKU#380001

REF. NO:	PART NO.	DESCRIPTION	In PSE?
1	001-0343	(CS) Assy, Frame, U916	Yes
2	000-6221	ASSEMBLY, MAST	Yes
3	001-0459	ASSY, U9, HANDLEBAR	No
4	000-6232	Belt Tensioner	Yes
5	000-6291	BELT JASON 1120-8MT-16	Yes
6	SM22900	ALTERNATOR, PRESTOLITE, RoHS	Yes
7	001-0340	(CS) Assy, Side Cover, LH, U916	Yes
8	001-0341	(CS) Assy, Side Cover, RH, U916	Yes
9	000-6257	INLET COVER	Yes
10	901-5493	PHILLIPS 10-32 x .75	Yes
11	901-5445	PHP 6-32 x 0.5 SCREW	Yes
12	901-5513	PHILLIPS .25-20 x .75	Yes
13	000-6432	BELT	Yes
14	000-6276	S6005 25 x 47 BEARING	Yes
15	902-6026	WSH-FLAT M10 REGULAR	Yes
16	902-6030	WSH-FLAT M12 WIDE	Yes
17	000-6484	M10 LOCK WASHER	Yes
18	902-4742	SHCS M10-1.5 X 25 G2	Yes
19	000-6488	M12 LOCK WASHER	Yes
20	902-4143	NUT NL M12-1.75 G2	Yes
21	902-3645	WSH-FLAT 0375, SAE ZINC	Yes
22	902-3640	WSH-FLAT 0313 ZINC	Yes
23	902-3853	WSH-FLAT 0375, ZINC	Yes
24	902-3852	WSH-LOCK 0313 ZINC	Yes
25	902-0401	HHCS 0375-16 x 2.25	Yes
26	902-0363	HHCS 0313-18 x 1 G8 ZINC	Yes
27	902-3189	NUT-NL 0375-16 G8 ZINC	Yes
28	902-5108	SCW-FHP, M4-0.7 x 20 SS	Yes
29	902-5680	SCW-SHCS, M8-1.25 X 20 SS	Yes
30	000-6297	SEAT POST SLEEVE	Yes
31	000-6255	SEAT ADJUSTMENT TEETH	Yes
32	000-6269	ASSEMBLY, SEAT POST	Yes
33	000-6217	POWER RESISTOR	Yes
34	000-6245	CIRCUIT BOARD SPACER	Yes
35	001-0342	(CS) Kit, Pedals, LH/RH, U/R916	Yes
36	001-0349	KIT, CHR, RH UPPER HANDLE, U/R916	Yes
37	001-0348	KIT, CHR, LH UPPER HANDLE, U/R916	Yes
38	001-6341	ASSY EMBLY, CHR, NON ROC	Yes
39	902-5665	SCW-SHCS, M6-1.0 x 16 SS	Yes
40	902-6104	WSH-FLAT, M6 REGULAR, ZINC	Yes
41	000-6314	INTERMEDIATE HUB	Yes
42	000-6214	INTERMEDIATE pulley	Yes
43	000-6248	PULLEY, 112 TOOTH	Yes
44	000-6244	ISIS BB, 73 x 128mm	Yes
45	001-6365	DISC CRANK	Yes
46	000-6324	Left Crank Arm	Yes
47	902-5681	SCW-SHCS, M8-1.25 X 25 SS	Yes

48	000-6275	M8 LOCK WASHER	Yes
49	902-6065	WSH-FLAT, M8 REGULAR SS	Yes
50	000-6264	SEAT, MED WIDTH	Yes
51	SM21778	NUT, ALTERNATOR	Yes
52	000-6238	Flywheel	Yes
53	SM22517	DISK, SPEED SENSOR	Yes
54	SM21445	Assembly, Speed Sensor	Yes
55	000-6259	Shroud, Mast, Plastic, Left	Yes
56	000-6260	Shroud, Mast, Plastic, Right	Yes
57	SM22191	WASHER, SHOULDER, .38 I.D.	Yes
58	000-6226	SHAFT, INTERMEDIATE HUB	No
59	000-6229	PULLEY, 8M INTERMEDIATE 22T	No
60	902-6024	WSH-FLAT M8 WIDE BLKZ	No
61	902-4725	SCW-SHCS M8-1.25 x 20 G2 BLKZ	No
62	001-0351	Basic External Retaining ring	Yes
63	001-0391	Right Crank Arm	Yes
64	001-0424	WATER BOTTLE HOLDER	No
65	902-6533	WSH-FLAT M8 NARROW NICKLE	No
66	902-6062	WSH-FLAT M6 REGULAR SS	No
67	902-4712	SCW-SHC M6-1.0 x 25 G2 BLKZ	No
68	902-6531	WSH-FLAT M6 REGULAR NICKLE	No
69	902-4707	SCW-SHCS M6-1.0 x 10 G2 BLKZ	No
70	901-5495	SCW-PHP #10-32 x 1 SS	No
71	902-5890	SCW-PHP M6-1.0 x 16 SS	No
72	902-5862	SCW-PHP M4- 0.7 x 8 SS	No
73	SM14123	5100 Battery kit (includes Battery, Loop & Hook Velcro, and Tyrap)	Yes
74	SM27451	Assembly, PCBA, Power Control	Yes
75	000-6246	COAX Female Connector	Yes
76	SM41700	Assembly, Console, U916	Yes
Not shown	000-0409	220VAC, 1A, International Power supply	Yes
Not shown	000-6247	TRANSPORT WHEEL	Yes
Not shown	000-6270	STABILIZER FOOT	Yes
Not shown	000-6490	Cable, Coaxial, TV/Power	Yes
Not shown	001-0344	(CS) Kit, Spares-Common, HW, U916	Yes
Not shown	001-0394	U9 Hardware Kit/Assembly kit	Yes
Not shown	001-5378	Assembly, Cable, Contact Heart Rate	Yes
Not shown	001-6883	U916 Assembly Manual	Yes
Not shown	001-6884	U/R916 Service Manual	Yes
Not shown	001-6992	CD, Owners manual	Yes
Not shown	002-9070	Assembly, Cable, Alternator	Yes
Not shown	002-9071	Assembly, Cable, Load Resistor	Yes
Not shown	003-3446	Assembly manual, Master, U916	Yes
Not shown	003-3447	Assembly manual, German, U916	Yes
Not shown	003-3448	Assembly manual, French, U916	Yes
Not shown	003-3449	Assembly manual, Italian, U916	Yes
Not shown	003-3450	Assembly manual, Spanish, U916	Yes
Not shown	003-3451	Assembly manual, Dutch, U916	Yes
Not shown	SM002-0495	KIT, EUROPE, POWDERCORD, C13	Yes
Not shown	SM13587	Assembly, Cable, External Power	Yes
Not shown	SM20507	POWER CORD, EUROPEAN, VDE APPVD	Yes
Not shown	SM20633	CORD, POWER, AUSTRALIAN	Yes
Not shown	SM21096	POWER CORD, ENGLISH, FUSED	Yes

Not shown	SM25465	Assembly, Cable, Battery	Yes
Not shown	SM25473	Assembly, Cable, Console Interface	Yes
Not shown	SM27767	IC, CONTACT HR W/MOUNT HEADER	Yes
Not shown	SM40468	KEYPANEL,CONSOLE	Yes
Not shown	SM40679	Assembly, Cable, T-Bar Grip	Yes
Not shown	SM40803	LENS,C51 CONSOLE	Yes
Not shown	SM40820	PCBA ASSY	Yes
Not shown	SM40826	PCB ASSY, C51 LCD DISPLAY	Yes
Not shown	SM41187	Assembly, PCBA, Heart Rate telemetry	Yes
Not shown	SM41702	Assembly, Cable, Telemetry Heart Rate	Yes