

| PART NO. | DESCRIPTION | QTY. | PART NO. | DESCRIPTION | QTY. |
|-----------|---|------|----------|--|------|
| 21774 | PIN,HITCH | 2 | 41259 | PIN, CLEVIS, 3/8" DIA. X 2.00" LG | 2 |
| 22016 | SCREW,.375-16X2.50,HEX HD CAP | 3 | 41261 | BRACKET, COVER SUPPORT | 2 |
| 22026 | SCREW,.250-20X1.00,HEX HD CAP | 10 | 41262 | BRACKET, POWER INLET COVER | 1 |
| 22027 | WASHER,SPLIT LOCK,.250 | 12 | 41264 | OVERLAY, KEYPAD, ERGO | 1 |
| 22029 | NUT,.375-16,NYLON INSERT, HEX | 2 | 41268 | SCREW,6-32 X .3125 LG SHC | 6 |
| 22030 | WASHER, FLAT, 3/8 ZINC PLTD | 20 | 41271 | SCREW, #10-32 X .50, PAN HEAD, W/LOCK WASHER | 9 |
| 22031 | WASHER,.281X1.00X.047,STEEL,ZINC | 10 | 41287 | DECAL, SIDE RAIL, T9.12/T9.14 | 2 |
| 22047 | WASHER,.281X.625X.063,STEEL,ZINC | 12 | 41326 | WELDMNT,FRAME, 63" DECK | 1 |
| 22074 | EDGE TRIM, RUBBER | 2 | 41330 | BED, SLIDER, NTR, 63" | 1 |
| 22076 | EDGE TRIM, RUBBER, 3/4 X 15/32 | 2 | 41331 | BELT, WALKING, 63" | 1 |
| 22077 | .375, NUT, HEX | 2 | 41332 | ASSEMBLY, CONSOLE, T9.16 | 1 |
| 22101 | SCREW,.250-20X.50,HEX HD CAP | 2 | 41333 | EXTRUSION, ALUMINUM, SIDE RAIL COVER, 63" DECK | 2 |
| 22164 | SCREW, .250-20 X 1.25, HEX HEAD CAP | 8 | 41334 | EXTRUSION, RUBBER, SIDE RAIL TOP, 63" DECK | 2 |
| 22196 | SCREW, .375-16 X 2.75, HEX HD CAP | 8 | 41443 | CABLE ASSY, COMBINED HR, MODULE SIDE | 1 |
| 22246 | SCREW,.375-16x1.00,HEX HD CAP | 6 | 41472 | ASSEMBLY, REAR ROLLER, V2 | 1 |
| 23729 | WASHER, SPLIT LOCK 3/8 | 15 | 41474 | ENDCAP, SIDERAIL, RIGHT | 1 |
| 24162 | BUTTON HEAD CAP SCREW 0.250"-20 x 0.375 | 4 | 41475 | ENDCAP, SIDERAIL, LEFT | 1 |
| 27000 | FAST TAB, .25 | 1 | | | |
| 27458 | DRIVE BELY, POLY-V | 1 | | | |
| 27551 | WHEEL, POLYOEFIN | 4 | | | |
| 27552 | ROTARY TENSIONER | 1 | | | |
| 27568 | WASHER, M8, FLAT, BLACK OXIDE | 2 | | | |
| 27569 | M8 x 1.25 x 90,HEX HEAD CAP, BLACK | 2 | | | |
| 27585 | WASHER, 406X1.25X.047,STEEL,ZINC | 1 | | | |
| 27764 | SCREW, THREAD FORMING #6-32 X .375 | 1 | | | |
| 27951 | ASSY, CABLE, LOWER C50 COMM. | 1 | | | |
| 35920-004 | WASHER, FLAT, ZINC PLATED, METRIC | 2 | | | |
| 36271-001 | FOAM, PAD | 2 | | | |
| 40564 | BEARING, IGUS JFI-2428-16 | 2 | | | |
| 40639 | SCREW, #6-32 X .4375 SOCKET HEAD CAP | 5 | | | |
| 41006 | WELDMNT, GRADE | 1 | | | |
| 41008 | ASSEMBLY, ERGO BAR, TOUCH SENSOR | 1 | | | |
| 41009 | ASSEMBLY, DRIVE ROLLER | 1 | | | |
| 41030 | HOOD, KICK PLATE | 1 | | | |
| 41034 | CONTACT PLATE,CHR | 4 | | | |
| 41035 | SUPPORT, GRADE WELDMNT, MACHINED, NTR | 2 | | | |
| 41042 | BRACKET, FRONT ROLLER | 2 | | | |
| 41067 | COMPRESSION MOUNT, LONG | 6 | | | |
| 41077 | COMPRESSION MOUNT, DECK | 4 | | | |
| 41084 | DECAL, KICK PLATE, REACT LOGO | 1 | | | |
| 41097 | HOUSING, ERGO, TOP LEFT, CHR | 1 | | | |
| 41098 | HOUSING, ERGO, BOTTOM LEFT, CHR | 1 | | | |
| 41102 | HOUSING,ERGO, TOP RIGHT,CHR | 1 | | | |
| 41103 | HOUSING, ERGO, BOTTOM RIGHT, CHR | 1 | | | |
| 41112 | HOUSING, ERGO, BOTTOM CENTER | 1 | | | |
| 41129 | BUSHING, SPANNER, NTR | 4 | | | |
| 41132 | WELDMNT, UPRIGHT, T9 | 1 | | | |
| 41154 | ASSY, MAGNETIC SWITCH | 1 | | | |
| 41158 | END CAP, HANDLE BAR, MOLDED | 2 | | | |
| 41169 | CABLE ASSY, CONTACT HR PADS | 1 | | | |
| 41180 | HEART RATE DETECTION MODULE | 1 | | | |
| 41190 | ASSY,CABLE,REAR POWER | 1 | | | |
| 41193 | ASSY,CABLE, ROC KEYS | 1 | | | |
| 41199 | CABLE ASSY, TACH EXTENSION | 1 | | | |
| 41212 | ADHESIVE, TRANSFER TAPE, 25 MIL | 4 | | | |
| 41232 | PAD LEVELING, NTR | 2 | | | |

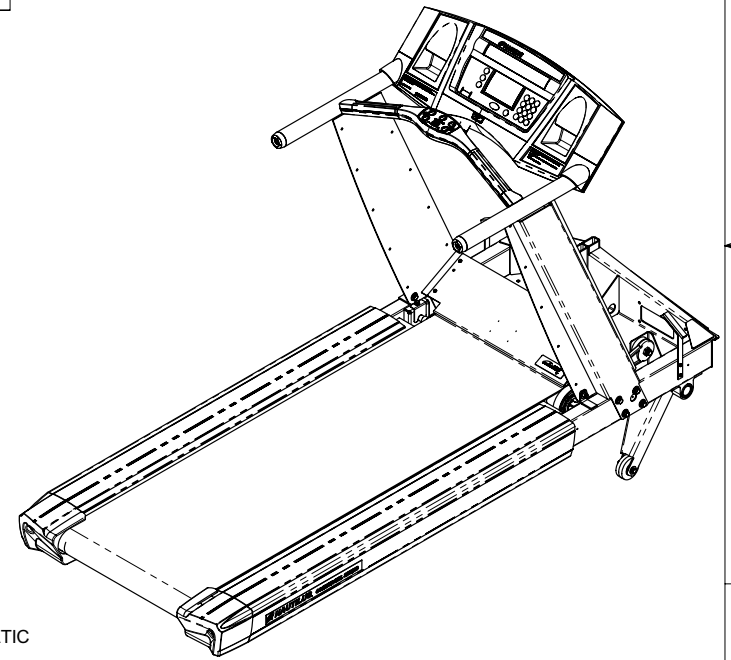
| REVISIONS | | | |
|-----------|--|---------|---------|
| REV. | DESCRIPTION | DATE | DRAFTER |
| A | RELEASED FOR PRODUCTION PER ECO 961500 | 7/19/05 | SW |

**SM41315 - Hardware Kit for Installation (T7/T9)
(Screws, Washers, Bolts,...)**

**SM41096 - COVER, MOTOR, FRONT
SM41099 - COVER, MOTOR, LOWER LEFT
SM41108 - COVER, MOTOR, LOWER RIGHT
SM41109 - COVER, UPRIGHT, TOP RIGHT**

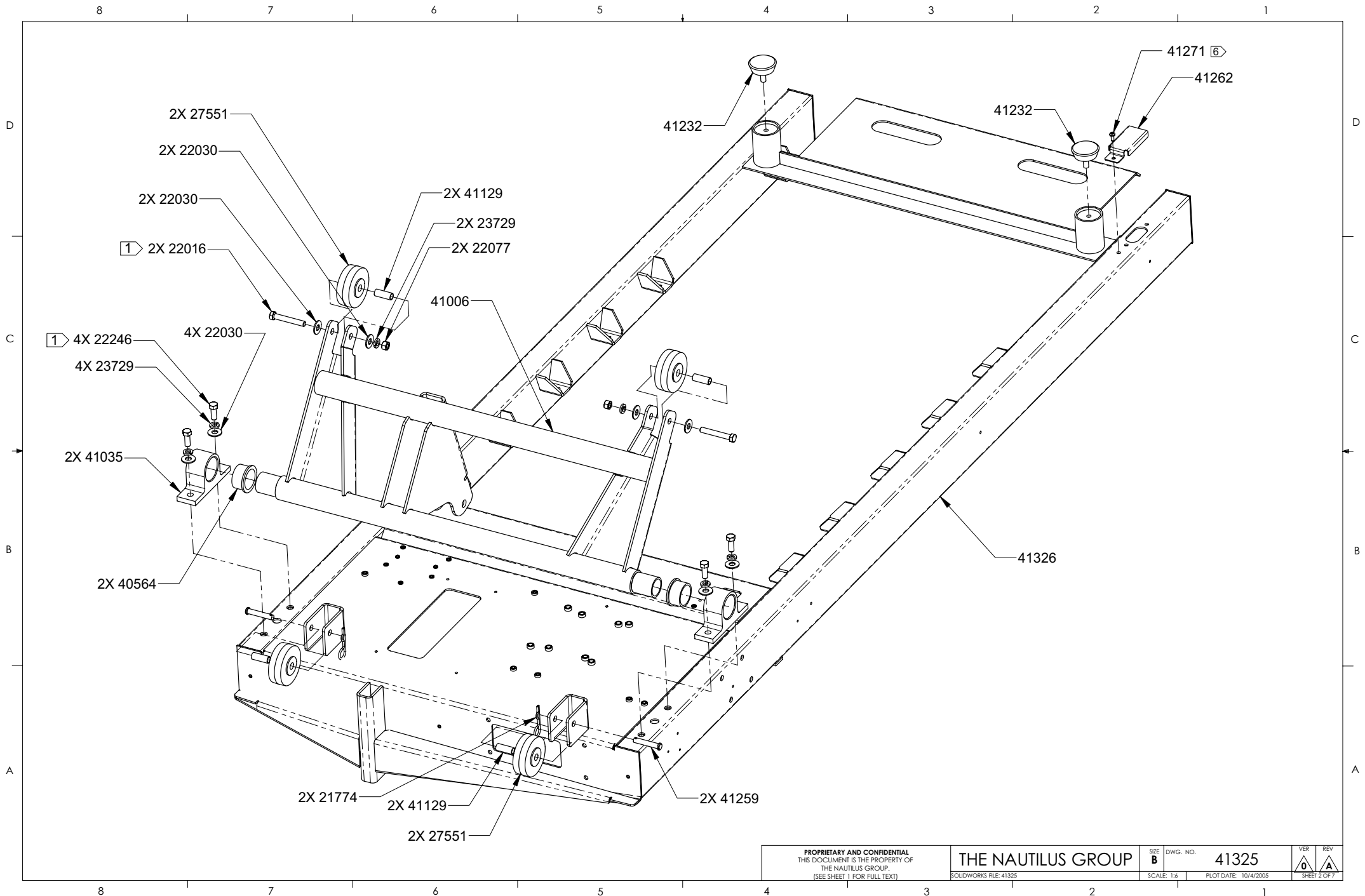
SM41110 Cover Upright Top Left

- NOTES:
- TORQUE FASTENER TO 20 FT. LBS.
 - TORQUE FASTENER TO 10 IN. LBS.
 - TORQUE FASTENER TO 70 IN. LBS.
 - APPLY LOCTITE 243 TO THREADS.
 - TIGHTEN NUT TO WITHIN 1/8" - 1/16" OF TOUCHING UPRIGHT. UPRIGHT SHOULD ROTATE FREELY. REPLACE NUT WITH NEW ONE, IF NUT NEEDS TO BE BACKED OFF.
 - TORQUE FASTENER 22 IN. LBS.
 - TORQUE FASTENER 65 IN. LBS.
 - FOR ELECTRICAL DIAGRAM SEE 41519
 - CABLES AND HARNESSES NOT SHOWN SEE ELECTRICAL SCHEMATIC



| | | | | | |
|--|--|--|--|--|----------------------|
| UNLESS OTHERWISE SPECIFIED: 1. ALL DIMENSIONS APPLY BEFORE PLATING OR COATING. 2. REMOVE ALL BURRS, BREAK SHARP EDGES .020 MAX ALL MACHINES SURFACES 125 3. ALL DIMENSIONS ARE IN INCHES. 4. ALL VIEWS THIRD ANGLE PROJECTION. | | TOLERANCES ANGLES: .X ±0.1 BENT ±2° .XX ±0.03 MACHINED ±0° 30' .XXX ±0.010 | | THE NAUTILUS GROUP MECHANICAL ASSY, T9.16 TREADMILL | |
| CONFIDENTIAL AND PROPRIETARY THIS DOCUMENT IS THE PROPERTY OF THE NAUTILUS GROUP. IT MAY NOT BE REPRODUCED IN WHOLE OR PART, PROVIDED TO THIRD PARTIES, OR USED FOR ANY PURPOSE OTHER THAN THE PERFORMANCE OF WORK FOR THE NAUTILUS GROUP, WITHOUT WRITTEN AUTHORIZATION. ALL RIGHTS ARE RESERVED, INCLUDING COPYRIGHTS. | | MATERIAL: FINISH: | | | |
| SOLIDWORKS MODEL FILE: 41325 | | DO NOT SCALE DRAWING | | SCALE: 1:12 | PLOT DATE: 10/4/2005 |
| SIZE B | | DWG. NO. 41325 | | VER 0 | REV A |

Digitally signed by Cathey Clark
 Date: 2005.10.24 07:11:58 -0500
 Reason: Document is released
 Location: Tulsa, OK



PROPRIETARY AND CONFIDENTIAL
 THIS DOCUMENT IS THE PROPERTY OF
 THE NAUTILUS GROUP.
 (SEE SHEET 1 FOR FULL TEXT)

THE NAUTILUS GROUP

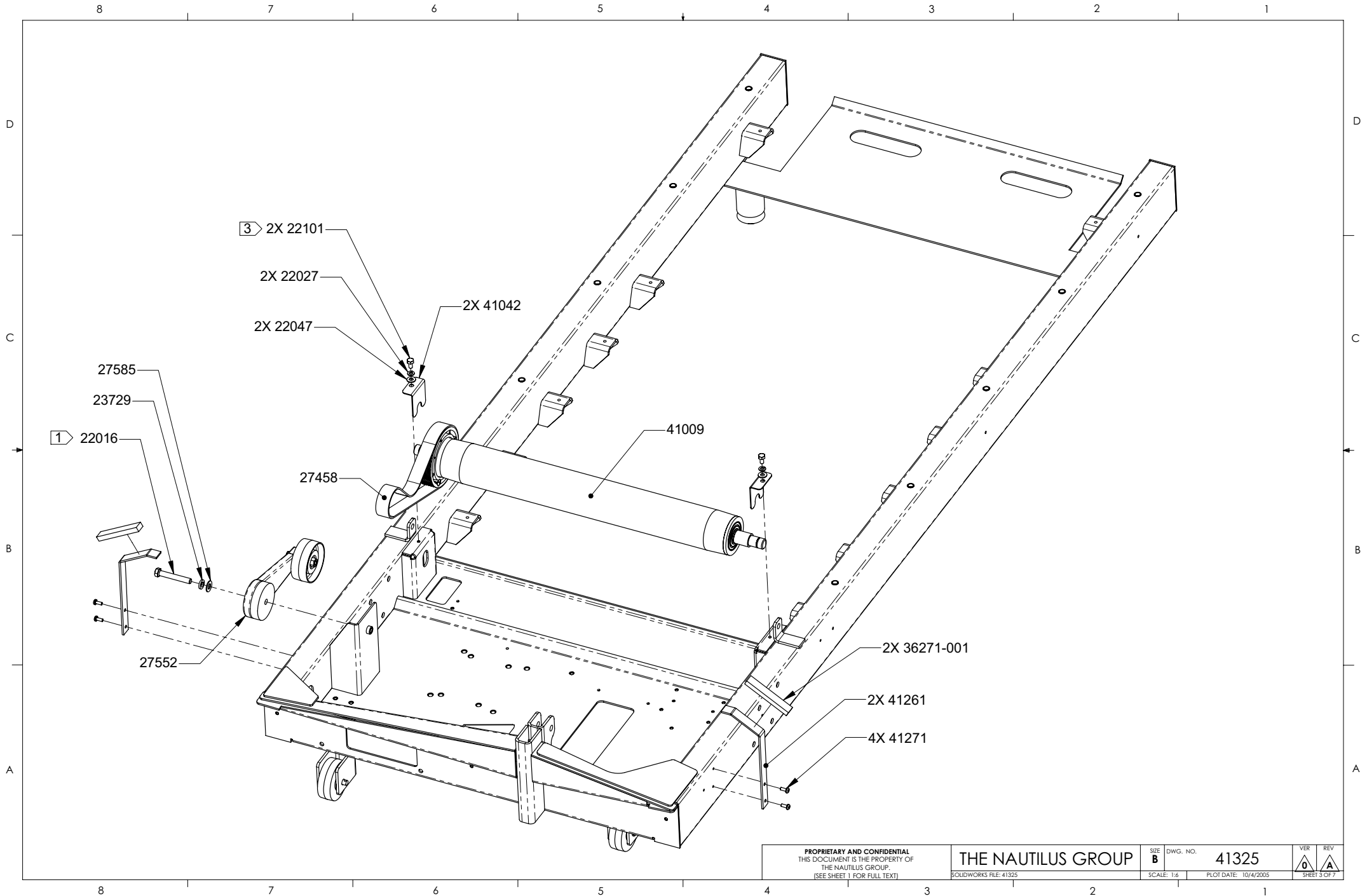
SIZE **B** DWG. NO. **41325**

| | |
|--------------|-----|
| VER | REV |
| 0 | A |
| SHEET 2 OF 7 | |

SOLIDWORKS FILE: 41325

SCALE: 1:6

PLOT DATE: 10/4/2005



PROPRIETARY AND CONFIDENTIAL
 THIS DOCUMENT IS THE PROPERTY OF
 THE NAUTILUS GROUP.
 (SEE SHEET 1 FOR FULL TEXT)

THE NAUTILUS GROUP

SIZE **B** DWG. NO. **41325**

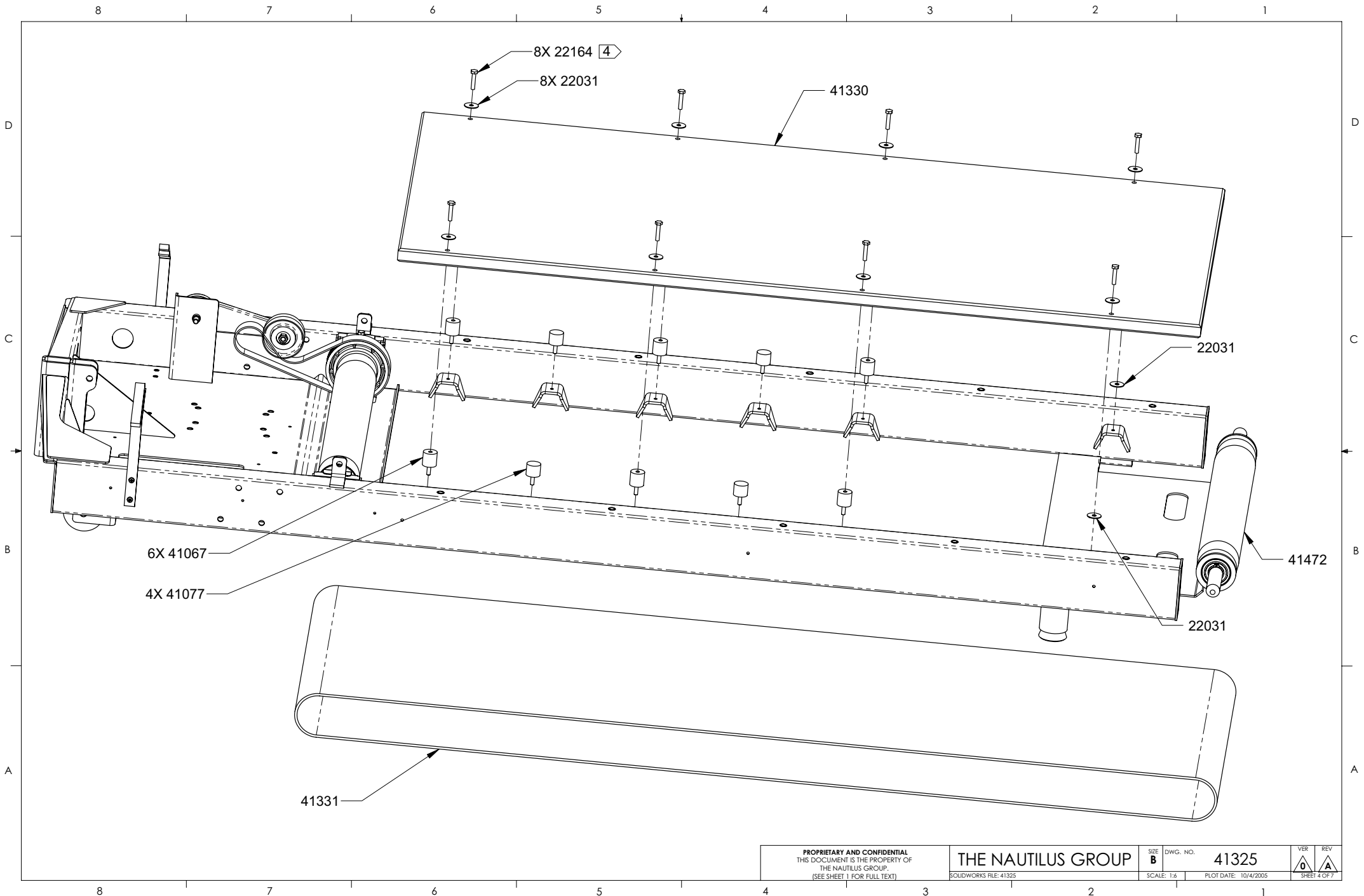
| | |
|--------------|-----|
| VER | REV |
| 0 | A |
| SHEET 3 OF 7 | |

SOLIDWORKS FILE: 41325

SCALE: 1:6

PLOT DATE: 10/4/2005

8 7 6 5 4 3 2 1



PROPRIETARY AND CONFIDENTIAL
 THIS DOCUMENT IS THE PROPERTY OF
 THE NAUTILUS GROUP.
 (SEE SHEET 1 FOR FULL TEXT)

THE NAUTILUS GROUP

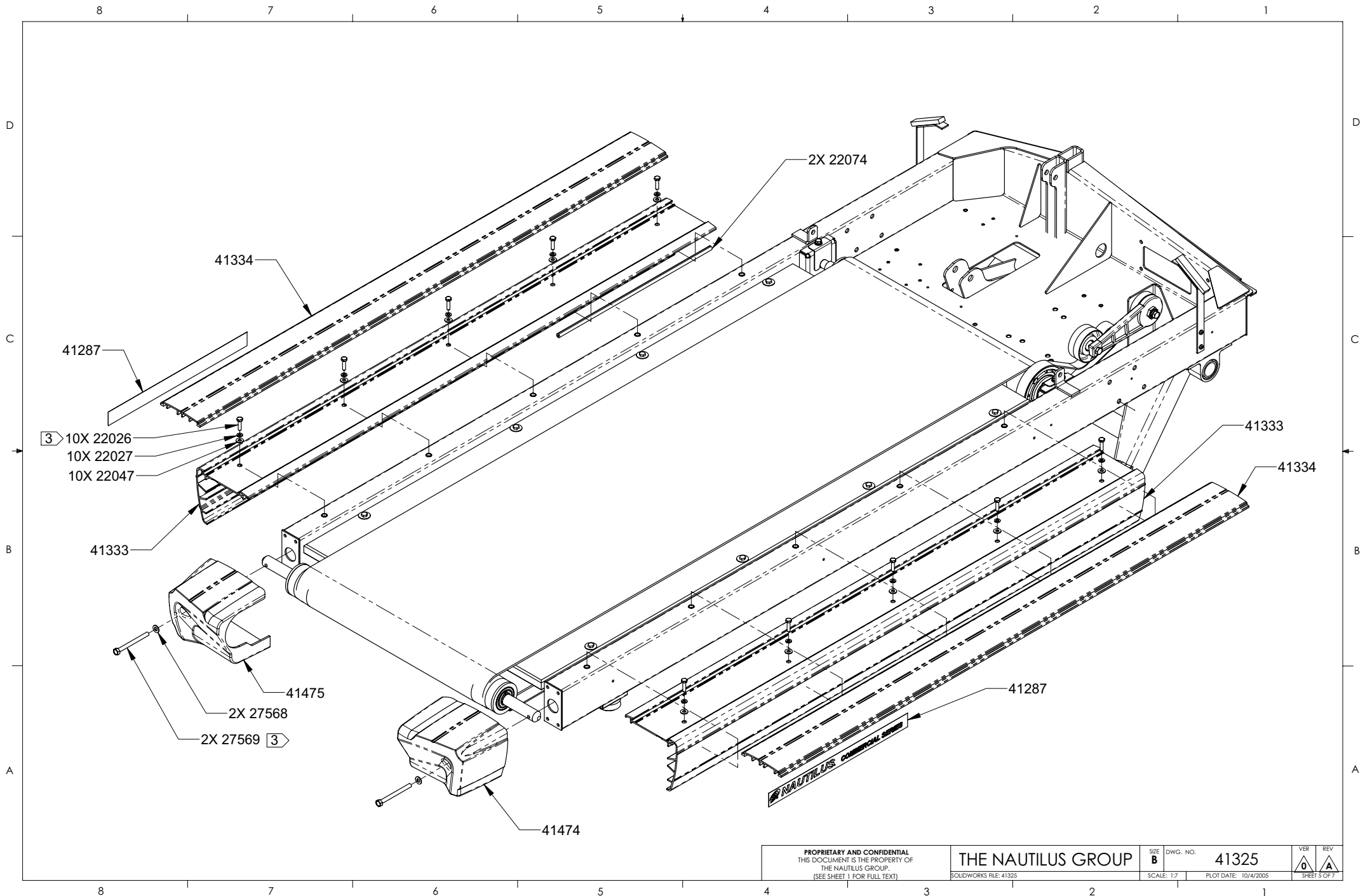
SIZE **B** DWG. NO. **41325**

| | |
|--------------|-----|
| VER | REV |
| 0 | A |
| SHEET 4 OF 7 | |

SOLIDWORKS FILE: 41325

SCALE: 1:6

PLOT DATE: 10/4/2005



PROPRIETARY AND CONFIDENTIAL
 THIS DOCUMENT IS THE PROPERTY OF
 THE NAUTILUS GROUP.
 (SEE SHEET 1 FOR FULL TEXT)

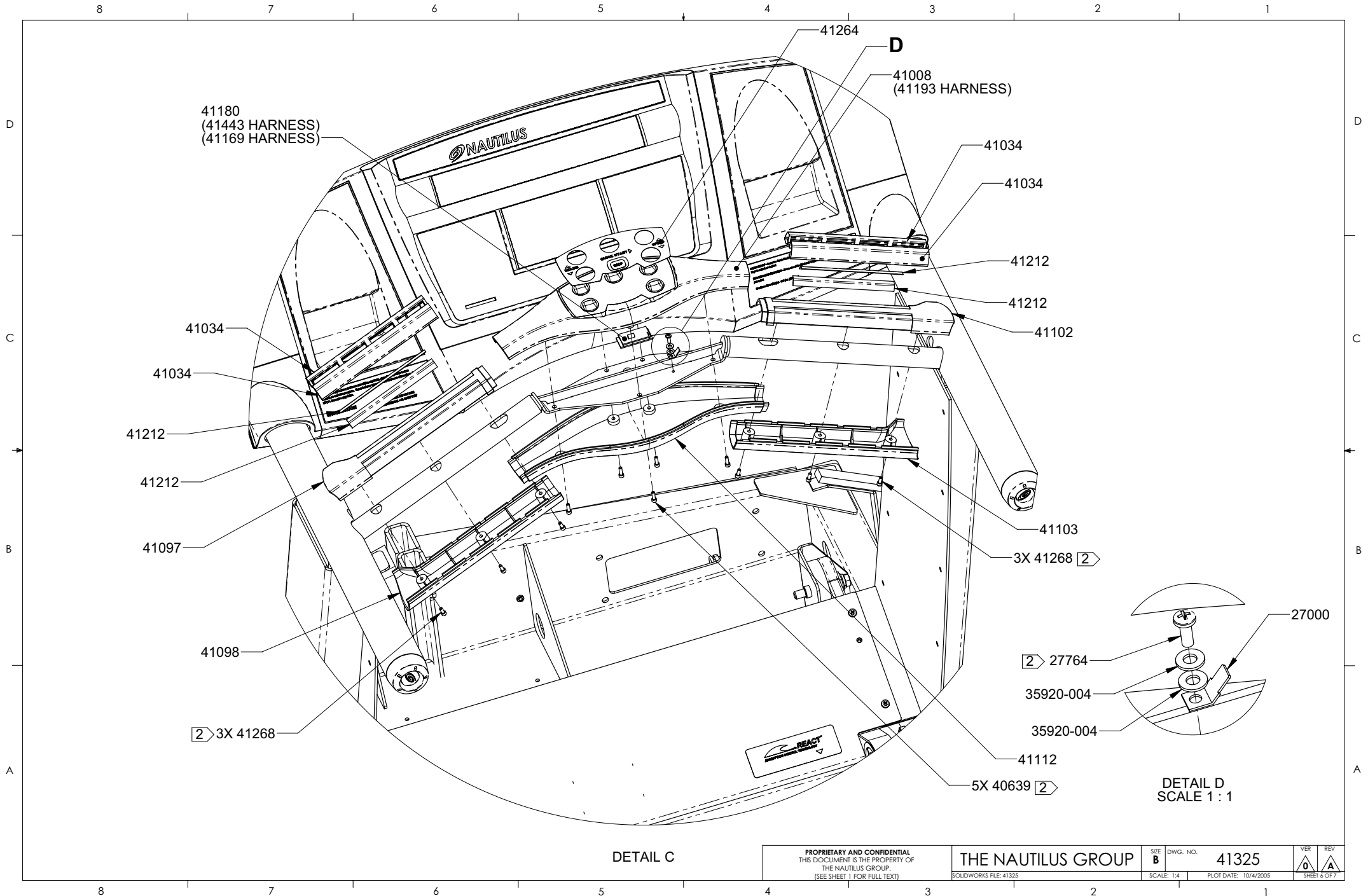
THE NAUTILUS GROUP

SOLIDWORKS FILE: 41325

SIZE **B** DWG. NO. **41325**

SCALE: 1:7 PLOT DATE: 10/4/2005

| | |
|--------------|-----|
| VER | REV |
| 0 | A |
| SHEET 3 OF 7 | |



PROPRIETARY AND CONFIDENTIAL
THIS DOCUMENT IS THE PROPERTY OF
THE NAUTILUS GROUP.
(SEE SHEET 1 FOR FULL TEXT)

THE NAUTILUS GROUP

SIZE **B** DWG. NO. **41325**

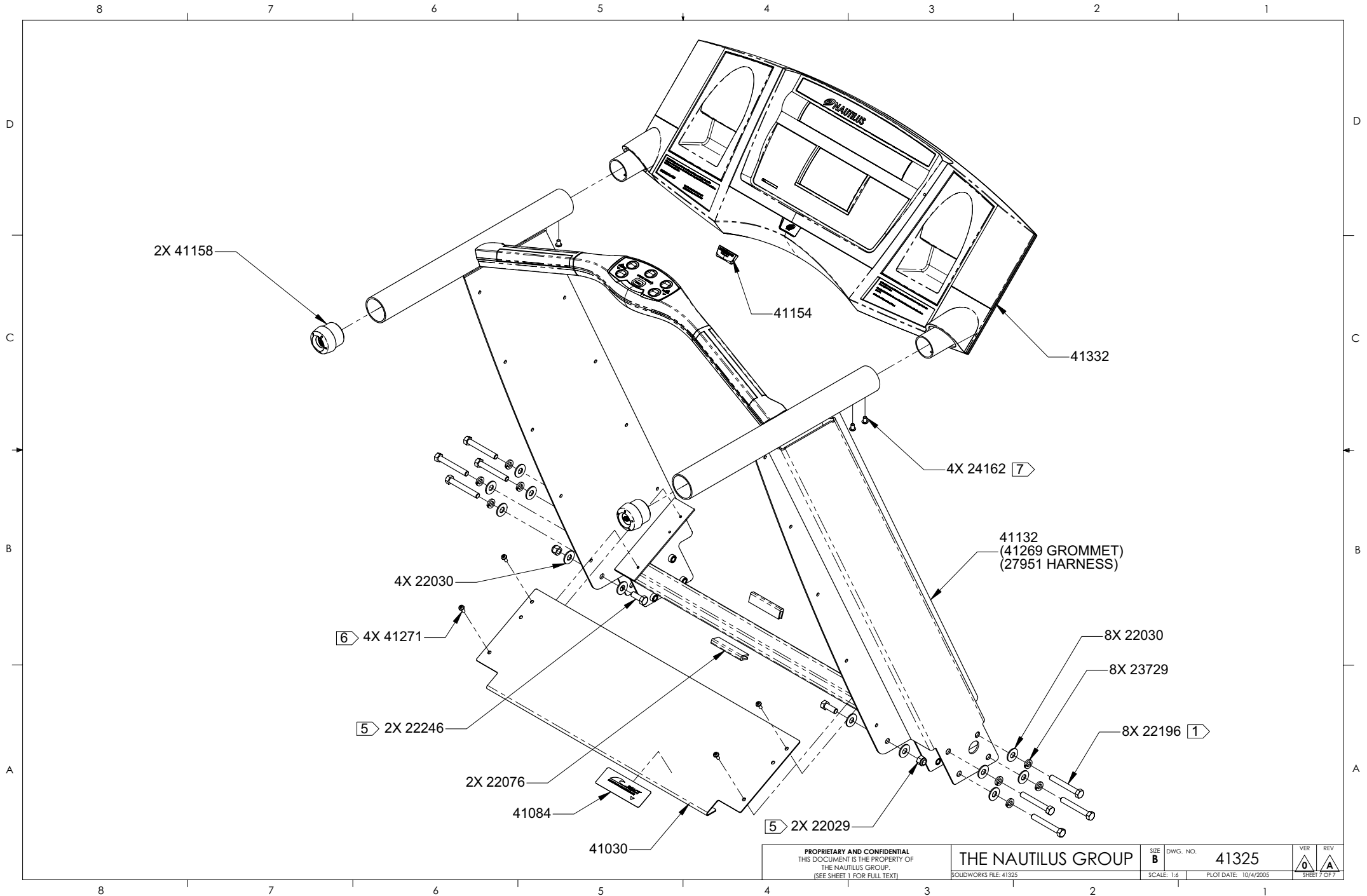
| | |
|--------------|-----|
| VER | REV |
| 0 | A |
| SHEET 6 OF 7 | |

SOLIDWORKS FILE: 41325

SCALE: 1:4

PLOT DATE: 10/4/2005

8 7 6 5 4 3 2 1



PROPRIETARY AND CONFIDENTIAL
 THIS DOCUMENT IS THE PROPERTY OF
 THE NAUTILUS GROUP.
 (SEE SHEET 1 FOR FULL TEXT)

THE NAUTILUS GROUP

SOLIDWORKS FILE: 41325

SIZE **B** DWG. NO. **41325**

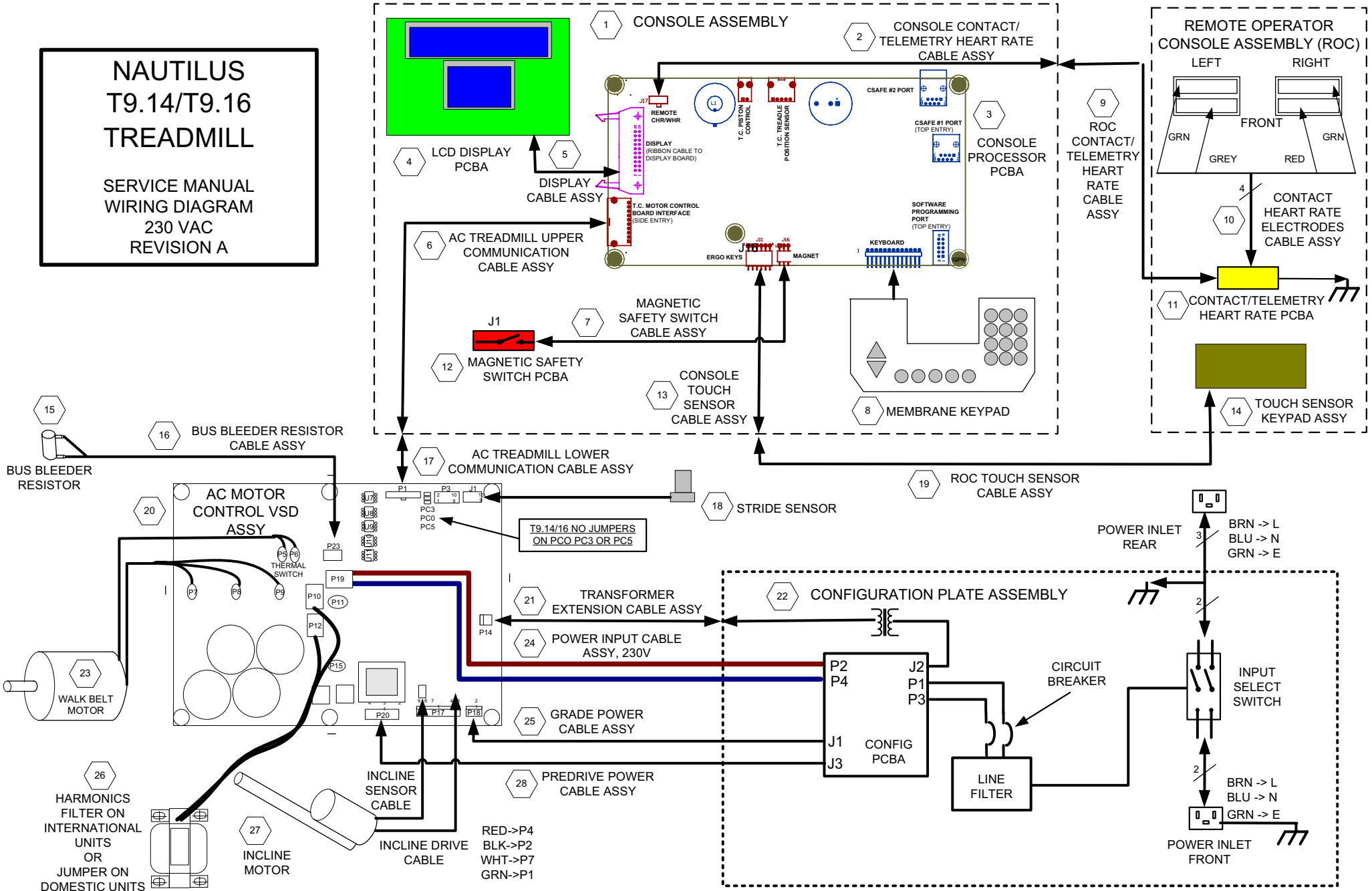
SCALE: 1:6 PLOT DATE: 10/4/2005

| VER | REV |
|-----|-----|
| 0 | A |

SHEET 7 OF 7

**NAUTILUS
T9.14/T9.16
TREADMILL**

SERVICE MANUAL
WIRING DIAGRAM
230 VAC
REVISION A



T9.14/T9.16 230 VAC

| Reference Designator | Part Number | Description |
|-----------------------------|--------------------|---|
| 1 | 41321 | CONSOLE ASSEMBLY, T9.14 |
| 1 | 41332 | CONSOLE ASSEMBLY, T9.16 |
| 2 | 41442 | CONTACT/TELEMETRY HEART RATE CONSOLE CABLE ASSEMBLY |
| 3 | 40824 | CONSOLE PROCESSOR PCBA |
| 4 | 40826 | LCD DISPLAY PCBA, T9.14 |
| 4 | 40865 | LCD DISPLAY PCBA, T9.16 |
| 5 | 41175 | DISPLAY CABLE ASSEMBLY |
| 6 | 27952 | AC TREADMILL UPPER COMMUNICATION CABLE ASSEMBLY |
| 7 | 41194 | MAGNETIC SAFETY SWITCH CABLE ASSEMBLY |
| 8 | 41280 | MEMBRANE KEYPAD, T9.14 |
| 8 | 41460 | MEMBRANE KEYPAD, T9.16 |
| 9 | 41443 | CONTACT/TELEMETRY HEART RATE ROC CABLE ASSEMBLY |
| 10 | 41169 | CONTACT HEART RATE ELECTRODES CABLE ASSEMBLY |
| 11 | 41180 | CONTACT/TELEMETRY HEART RATE RECEIVER PCBA |
| 12 | 40854 | MAGNETIC SAFETY SWITCH PCBA |
| 13 | 41173 | CONSOLE TOUCH SENSOR CABLE ASSEMBLY |
| 14 | 41449 | TOUCH SENSOR KEYPAD ASSEMBLY |
| 15 | 41300 | BUS BLEEDER RESISTOR |
| 16 | 41392 | BUS BLEEDER RESISTOR CABLE ASSEMBLY |
| 17 | 27951 | AC TREADMILL LOWER COMMUNICATION CABLE ASSEMBLY |
| 18 | 41335 | STRIDE SENSOR |
| 19 | 41193 | ROC TOUCH SENSOR CABLE ASSEMBLY |
| 20 | 41463 | AC MOTOR CONTROL VSD ASSEMBLY |
| 21 | 27356 | TRANSFORMER EXTENSION CABLE ASSEMBLY |
| 22 | 41407 | CONFIGURATION PLATE ASSEMBLY |
| 23 | 27487 | WALK BELT MOTOR |
| 24 | 27073 | POWER INPUT CABLE, 230V |
| 25 | 35986-001 | GRADE POWER CABLE ASSEMBLY |
| 26 | 41404 | HARMONICS FILTER, INTERNATIONAL UNITS ONLY |
| 26 | 27122 | JUMPER TO REPLACE HARMONICS FILTER ON DOMESTIC UNITS ONLY |
| 27 | 41289 | INCLINE MOTOR |
| 28 | 27959 | PREDRIVE POWER CABLE ASSEMBLY |